

**LEGEND**

AC. ACRES	LB. LICENSED BUSINESS
AH. AHEAD	L.O.C. LIMITS OF CONSTRUCTION
AVE. AVENUE	LS. LAND SURVEYOR
BK. BACK	LT. LEFT
B. BASELINE	(M). MAP DATA
BLK. BLOCK	MAP BOOK
BLVD. BOULEVARD	M.B. NOT APPLICABLE
(C). CALCULATED DATA	NAD. NORTH AMERICAN DATUM
CB. CHORD BEARING	NO. NUMBER
C.B. CONDOMINIUM BOOK	N & D. NAIL AND DISC
C.B.S. CONCRETE BLOCK STRUCTURE	N.G.S. NATIONAL GEODETIC SURVEY
C.C.R. CERTIFIED CORNER RECORD	N.T.S. NOT TO SCALE
C. CENTERLINE	O.R.B. OFFICIAL RECORDS BOOK
CH. CHORD DISTANCE	PG.(S). PAGE(S)
CHN. CHAINS	(P). PLAT DATA
C.M. CONCRETE MONUMENT	P.B. PLAT BOOK
C.M.D. CONCRETE MONUMENT WITH DISC	P.L.S. PROFESSIONAL LAND SURVEYOR
CONC. CONCRETE	P.C. POINT OF CURVATURE
COR. CORNER	P.C.C. POINT OF COMPOUND CURVATURE
C.R. COUNTY ROAD	P.R.C. POINT OF REVERSE CURVATURE
(D). DEED DESCRIPTION	P.O.B. POINT OF BEGINNING
D. DEGREE OF CURVE	P.O.C. POINT ON CURVE
Δ. DELTA (INTERSECTION ANGLE)	P.O.T. POINT ON TANGENT
D.B. DEED BOOK	P.C.P. PERMANENT CONTROL POINT
DIA. DIAMETER	P.I. POINT OF INTERSECTION
DRN. DRAINAGE	PK. PARKER KALON NAIL (PK NAIL)
ESMT. EASEMENT	P.R.M. PERMANENT REFERENCE MONUMENT
EXIST. R/W. EXISTING RIGHT OF WAY	P.T. POINT OF TANGENCY
(F). FIELD SURVEY DATA	R. PROPERTY LINE
FED. PROJ. FEDERAL AID PROJECT	R. RADIUS
F.B. FIELD BOOK	RD. ROAD
F.D.O.T. FLORIDA DEPARTMENT OF TRANSPORTATION	REC. RECOVERED
F.P. FINANCIAL PROJECT	RLS. REGISTERED LAND SURVEYOR
FT. FOOT OR FEET	R.R. RAILROAD
(G). GOVERNMENT MEASURE	RT. RIGHT
G.P.S. GLOBAL POSITIONING SYSTEM	R/W. RIGHT OF WAY
INC. INCORPORATED	SEC. SECTION
ID. IDENTIFICATION	S.R. STATE ROAD
I.B. IRON BAR, NO IDENTIFICATION UNLESS OTHERWISE NOTED	S.R.D. STATE ROAD DEPARTMENT
I.B.C. IRON BAR AND CAP	SQ. SQUARE
I.P. IRON PIPE, NO IDENTIFICATION UNLESS OTHERWISE NOTED	ST. STREET
I.P.C. IRON PIPE AND CAP	STA. STATION
I.R. IRON ROD, NO IDENTIFICATION UNLESS OTHERWISE NOTED	T. TANGENT
I.R.C. IRON ROD AND CAP	T.B. TANGENT BEARING
JWG. JONES, WOOD & GENTRY, INC.	T.C. TANGENT TO CURVE
L. ARC LENGTH	TWP. TOWNSHIP
L.A. LIMITED ACCESS	W.F.S. WOOD FRAME STRUCTURE
	(0901) N.G.S. NUMERIC IDENTIFICATION FOR THE FLORIDA EAST ZONE OF THE FLORIDA STATE PLANE COORDINATE SYSTEM

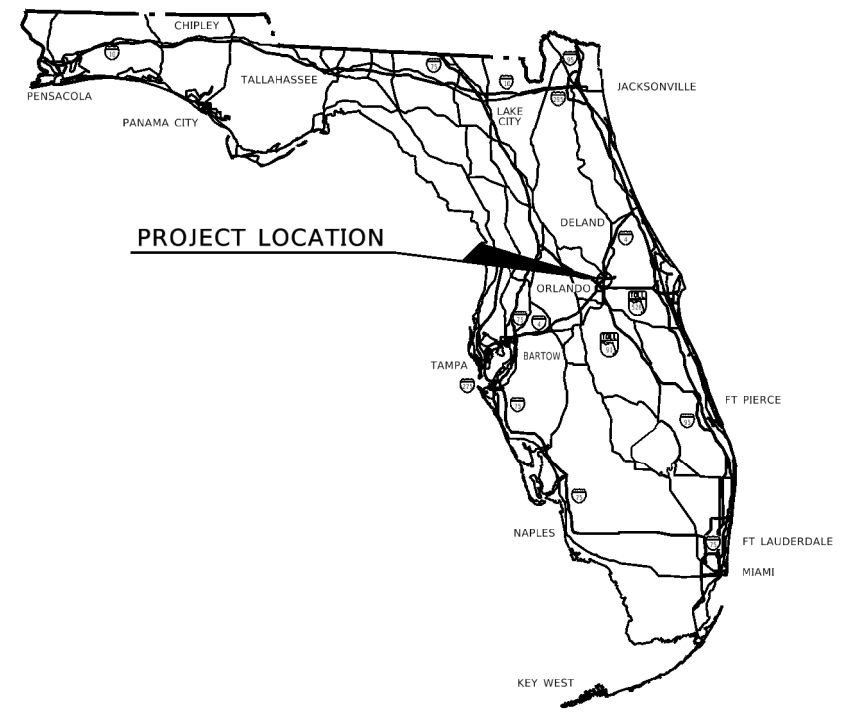
STATE OF FLORIDA  
DEPARTMENT OF TRANSPORTATION

**RIGHT OF WAY MAP**

STATE ROAD NO. 429

SECTION 77320

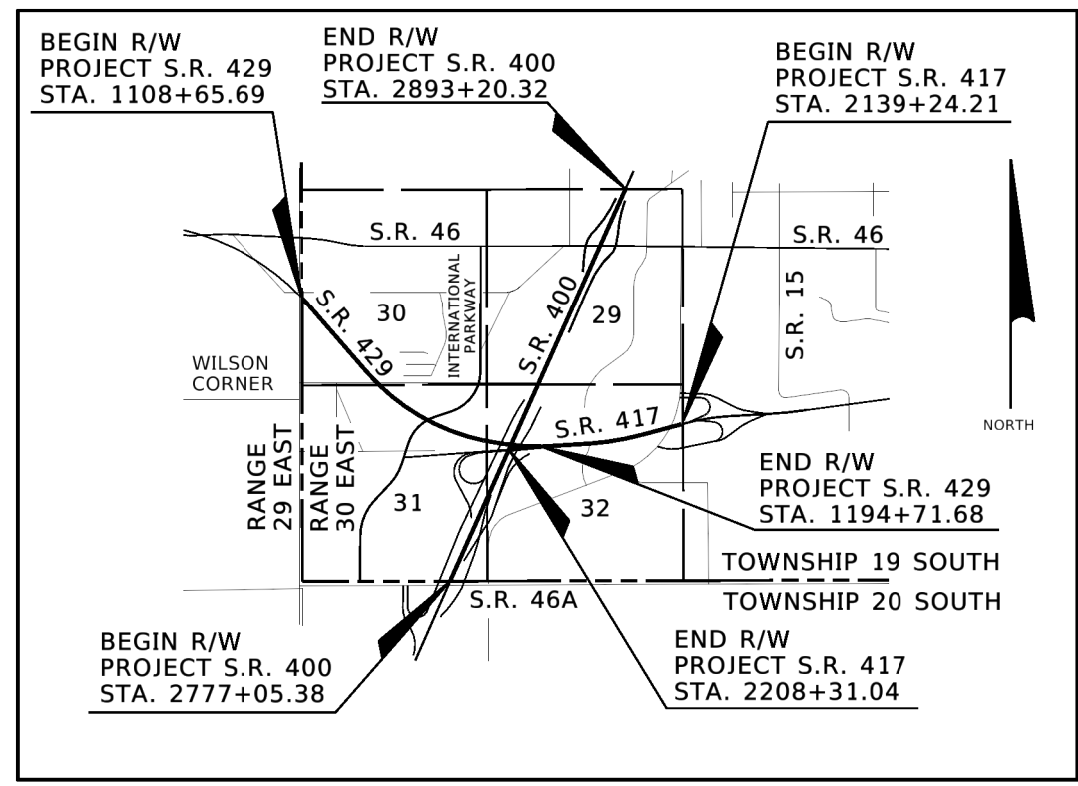
F.P. NO. 240200 4



LOCATED IN SECTIONS 29, 30, 31 AND 32  
TOWNSHIP 19 SOUTH, RANGE 30 EAST  
SEMINOLE COUNTY, FLORIDA

**GENERAL NOTES**

- THIS RIGHT OF WAY MAP WAS PREPARED FOR THE PURPOSE OF PREPARING LEGAL LAND DESCRIPTIONS, ACQUISITION DOCUMENTS, MONUMENTATION, PROPERTY MANAGEMENT AND AS AN AID IN THE APPRAISAL OF THE RIGHT OF WAY REQUIRED FOR TRANSPORTATION FACILITIES. THIS MAP IS NOT A SURVEY.
- THIS RIGHT OF WAY MAP IS SUPPORTED BY A RIGHT OF WAY CONTROL SURVEY DATED PREPARED UNDER THE RESPONSIBLE CHARGE OF JOHN F. CHENEY, FLORIDA PROFESSIONAL LAND SURVEYOR AND MAPPER, REGISTRATION NO. 4286. CERTIFIED COPIES OF THIS SURVEY ARE FILED OF RECORD IN THE FLORIDA DEPARTMENT OF TRANSPORTATION DISTRICT FIVE OFFICE IN DELAND, VOLUSIA COUNTY, FLORIDA.
- THE BEARINGS AND COORDINATE VALUES SHOWN HEREON ARE BASED ON THE FLORIDA STATE PLANE COORDINATE SYSTEM, FLORIDA EAST ZONE (0901), 1983 NORTH AMERICAN DATUM, 2007 ADJUSTMENT, AS ESTABLISHED FROM THE "ORLANDO - ORANGE COUNTY EXPRESSWAY AUTHORITY PROJECT NETWORK CONTROL SURVEY, WEKIVA PARKWAY (S.R. 429) AND S.R. 46 REALIGNMENT", PREPARED BY HAROLD B. PETERS, PSM NO. 6301, WITH THE WANTMAN GROUP, INC. JOB NO. 7055, DATED FEBRUARY 3, 2012, DERIVING A BEARING OF S85°40'12"W ON THE CENTERLINE OF SURVEY OF STATE ROAD 417 BETWEEN P.T. STATION 2186+28.96 AND END SURVEY STATION 2208+31.04 AND DERIVING A BEARING OF N24°03'38"E ON THE CENTERLINE OF SURVEY OF STATE ROAD 400 BETWEEN BEGIN SURVEY STATION 2777+05.38 AND P.I. STATION 2850+62.51. CERTIFIED COPIES OF SAID CONTROL SURVEY ARE FILED IN THE SURVEYING AND MAPPING UNIT OF THE FLORIDA DEPARTMENT OF TRANSPORTATION, DISTRICT FIVE OFFICE, DELAND, FLORIDA.
- THE CURVE DATA (TANGENT AND LENGTH) AND THE CENTERLINE OF SURVEY STATIONING HAS BEEN CALCULATED BASED ON THE CENTRAL ANGLE OF THE CURVES EXPRESSED TO ONE-TENTH (0.0") OF A SECOND, AS DERIVED FROM THE COORDINATE VALUES FOR THE POINT OF INTERSECTION (P.I.) OF SAID CURVES AND THEIR RADIUS. THE CENTRAL ANGLE OF THE CURVES AND ALL BEARINGS SHOWN HEREON HAVE BEEN ROUNDED TO THE NEAREST SECOND (00") PER FLORIDA DEPARTMENT OF TRANSPORTATION MAPPING STANDARDS.
- ONLY FIXED IMPROVEMENTS PERTINENT TO THE PARCELS TO BE ACQUIRED ARE SHOWN. FIXED INTERIOR IMPROVEMENTS ARE NOT SHOWN.
- UNDERGROUND FOUNDATION ENCROACHMENTS, IF ANY, WERE NOT LOCATED.
- ALL RECORDED PLATS, OFFICIAL RECORD BOOKS AND DEED BOOKS REFERENCED HEREON ARE FOUND IN THE PUBLIC RECORDS OF SEMINOLE COUNTY, FLORIDA.
- THE CENTERLINE OF SURVEY WAS MONUMENTED ON A PROPORTIONAL DISTANCE BETWEEN THE MAJOR CONTROL POINTS SO AS TO COINCIDE WITH THE FLORIDA STATE PLANE COORDINATE SYSTEM, FLORIDA EAST ZONE (0901), NAD 1983, 1990 ADJUSTMENT.
- THE "AREA(S) OF ACQUISITION" SHOWN HEREON WERE ABSTRACTED FOR RIGHT OF WAY EASEMENTS, OWNERSHIP, AND OTHER INSTRUMENTS OF RECORD BY THE DISTRICT FIVE, SURVEYING AND MAPPING SECTION OF THE FLORIDA DEPARTMENT OF TRANSPORTATION.
- UNLESS OTHERWISE NOTED, ALL THE DATA DESIGNATED AS (F) IS THE RESULT OF DIRECT FIELD MEASUREMENTS, CALCULATED FROM A CLOSED FIELD TRAVERSE OR CALCULATED FROM REDUNDANT FIELD MEASUREMENTS.
- EXISTING RIGHT OF WAY LINES SHOWN HEREON ARE BASED ON THE STATE OF FLORIDA DEPARTMENT OF TRANSPORTATION RIGHT OF WAY MAPS FOR S.R. 417, SECTION 77160-2441; S. R. 400, SECTION 77160-2404, F.P. NO. 242598 1; S.R. 46, SECTION 77030-2505; I-4 CONNECTOR, SECTION 77407, F.P. NO. 415587 1 AND INTERNATIONAL PARKWAY, SEMINOLE COUNTY ENGINEERING DEPARTMENT MAP FOR GRANT ROAD/KATIE STREET, JOB NO. 1262-20, AS RECORDED IN RIGHT OF WAY MAP BOOK 2, PAGE 11. PUBLIC RECORDS OF SEMINOLE COUNTY, FLORIDA, UNLESS NOTED OTHERWISE.
- SURVEY ALIGNMENTS FOR STATE ROAD SECTIONS LISTED IN NOTE 9 WERE ESTABLISHED FROM EXISTING MONUMENTATION, CONSTRUCTION PLANS, CONSTRUCTED IMPROVEMENTS AND SAID RIGHT OF WAY MAPS.
- SIDE BLOCK LINE INTERSECTIONS INTO CENTERLINE OF SURVEY ARE ON THE PROJECTION OF THE SIDE BLOCK LINE, UNLESS NOTED OTHERWISE.
- NORTH-SOUTH AND EAST-WEST DIMENSION TIES TO RECOVERED MONUMENTATION NEAR VARIOUS LAND BOUNDARY CORNERS SHOWN HEREON ARE BY COORDINATE DIFFERENCE.
- THIS RIGHT OF WAY MAP IS SUPPORTED BY DATA CONTAINED IN ELECTRONIC FILE 2004CS.ZIP AND FIELD BOOKS NUMBERED 5001271, 5001272, 5001273 AND 5001274. THIS DATA IS FILED IN THE SURVEYING AND MAPPING SECTION OF THE FLORIDA DEPARTMENT OF TRANSPORTATION DISTRICT FIVE OFFICE, IN DELAND, FLORIDA.
- THE RECOVERED SURVEY MONUMENTATION SHOWN ON THIS RIGHT OF WAY MAP THAT IS DEPICTED IN CLOSE PROXIMITY TO A LAND BOUNDARY CORNER OR SUBDIVISION LOT CORNER, AND IS REFERENCED BY STATION AND OFFSET DATA WITHOUT ACCOMPANYING FIELD MEASUREMENTS, MAY NOT OCCUPY THE CORNER OF THE BOUNDARY BEING ILLUSTRATED. THIS STATION AND OFFSET INFORMATION IS ONLY FOR THE PURPOSE OF SHOWING THE LOCATION OF THE RECOVERED SURVEY MONUMENT IN RELATION TO THE CENTERLINE OF SURVEY AND/OR PROJECT ALIGNMENT.
- THE MUNICIPAL BOUNDARIES FOR THE CITIES OF SANFORD AND LAKE MARY AS SHOWN HEREON WERE SCALED FROM THE SEMINOLE COUNTY PROPERTY APPRAISER'S ADVANCED MAP SEARCH SECTION OF THE SEMINOLE COUNTY PROPERTY APPRAISER'S WEBSITE AT <http://scpaweb.scpafl.org/v3/> IN MARCH, 2013.
- THE TOPOGRAPHICAL FEATURES SHOWN HEREON ARE AS PROVIDED BY THE ENGINEER OF RECORD AND HAVE NOT BEEN FIELD VERIFIED BY THIS FIRM. DISTANCES SHOWN TO SAID FEATURES ARE TO THE PROVIDED LOCATIONS UNLESS SHOWN WITH A (F). FEATURE DISTANCES SHOWN WITH A (F) HAVE BEEN FIELD VERIFIED.
- ATTENTION IS DIRECTED TO THE FACT THESE MAPS MAY HAVE BEEN ALTERED IN SIZE BY REPRODUCTION. THIS MUST BE CONSIDERED WHEN OBTAINING SCALED DATA.



(VICINITY MAP)

**TOPOGRAPHY LEGEND**

	MAILBOX
	SINGLE SUPPORT SIGN
	TRAFFIC SIGNAL CONTROL BOX
	TRAFFIC SIGNAL MAST ARM
	GUARD RAIL
	HEDGE ROW
	TREE OR WOODS LINE

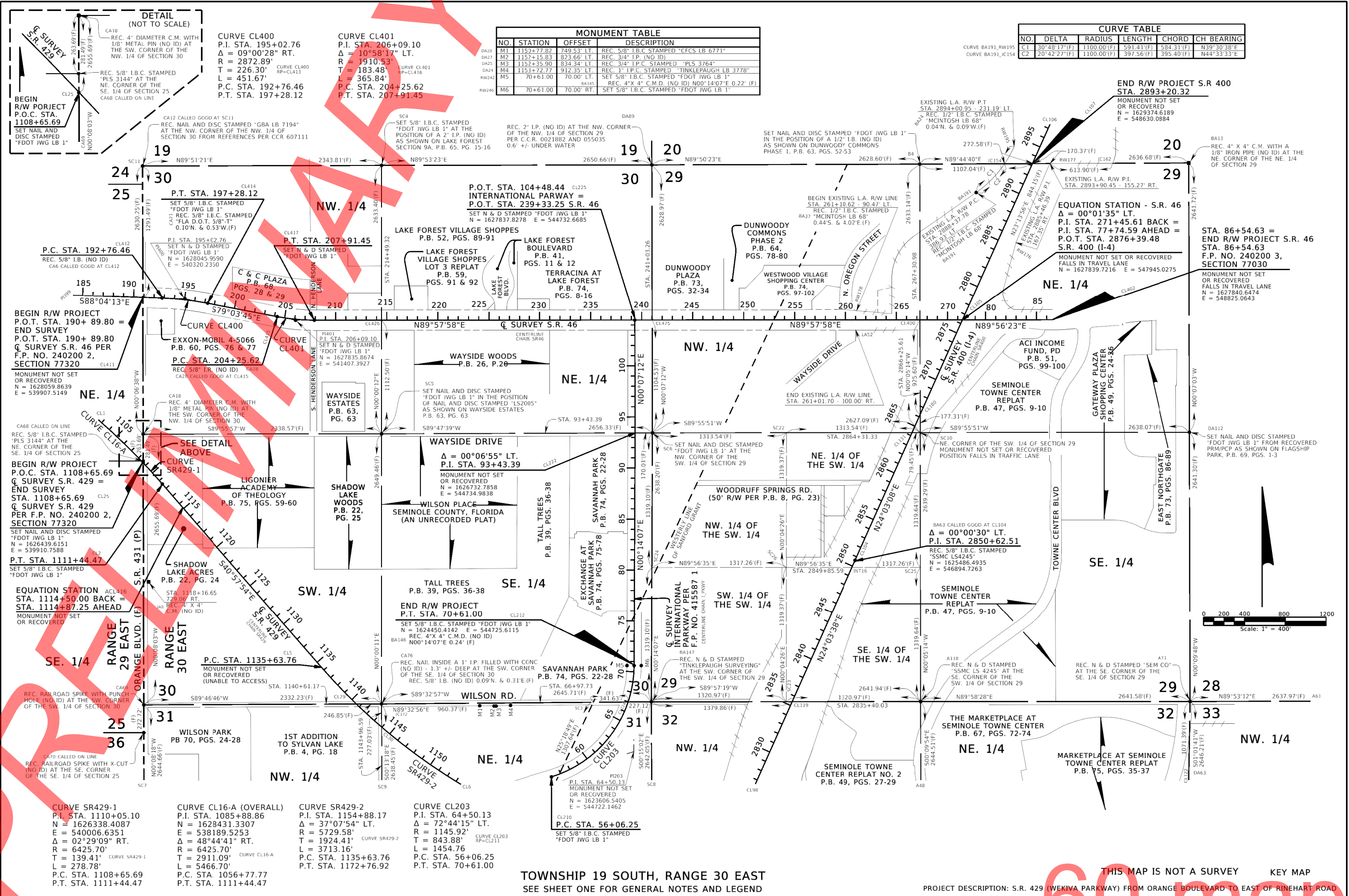
SHEET INDEX	
SHEET NO.	DESCRIPTION
1	COVER SHEET
2-3	KEY SHEET
4-12	DETAIL SHEETS
13-14	REFERENCES SHEETS
15	TABLE OF OWNERSHIP

PROJECT DESCRIPTION: S.R. 429 (WEKIVA PARKWAY) FROM ORANGE BOULEVARD TO EAST OF RINEHART ROAD

**THIS MAP IS NOT A SURVEY**  
**60 maps**

FILE: INVC001.DGN  
JOB NO.: 29007

<b>RIGHT OF WAY MAP</b>	FLORIDA DEPARTMENT OF TRANSPORTATION SURVEYING AND MAPPING	APPROVED BY _____ DATE _____	BY _____ DATE _____	FED. PROJ. N.A.	MAPS PREPARED BY: JONES, WOOD & GENTRY, INC. PROFESSIONAL SURVEYORS AND MAPPERS - LB 1	DATA SOURCE: SEE GENERAL NOTES SCALE: NOT TO SCALE
		REVISION _____ BY _____ DATE _____	REVISION _____ BY _____ DATE _____	STATE ROAD NO. 429 (WEKIVA PARKWAY)	SECTION 77320 SEMINOLE COUNTY	F.P. NO. 240200 4 SHEET 1 OF 15



NO.	STATION	OFFSET	DESCRIPTION
DA28	M1	1152+77.82	249.53' LT. REC. 5/8" I.B.C. STAMPED "CFCS LB 6771"
DA27	M2	1152+15.83	823.66' LT. REC. 3/4" I.P. (NO ID)
DA25	M3	1152+35.90	834.34' LT. REC. 3/4" I.P.C. STAMPED "PLS 3764"
DA24	M4	1153+72.77	912.35' LT. REC. 1" I.P.C. STAMPED "TINKLEPAUGH LB 3778"
RW242	M5	70+61.00	70.00' LT. SET 5/8" I.B.C. STAMPED "FDOT JWG LB 1"
RW246	M6	70+61.00	70.00' RT. SET 5/8" I.B.C. STAMPED "FDOT JWG LB 1"

NO.	DELTA	RADIUS	LENGTH	CHORD	CH BEARING
C1	30°48'17"(F)	1100.00'(F)	591.41'(F)	584.31'(F)	N39°30'38"E
C2	20°42'27"(F)	1100.00'(F)	397.56'(F)	395.40'(F)	N44°33'33"E

**CURVE CL400**  
 P.I. STA. 195+02.76  
 $\Delta = 09^{\circ}00'28"$  RT.  
 R = 2872.89'  
 L = 226.30'  
 T = 451.67'  
 P.C. STA. 192+76.46  
 P.T. STA. 197+28.12

**CURVE CL401**  
 P.I. STA. 206+09.10  
 $\Delta = 10^{\circ}58'17"$  LT.  
 R = 1910.53'  
 L = 183.48'  
 T = 365.84'  
 P.C. STA. 204+25.62  
 P.T. STA. 207+91.45

**CURVE SR429-1**  
 P.I. STA. 1110+05.10  
 N = 1626338.4087  
 E = 540006.6351  
 $\Delta = 02^{\circ}29'09"$  RT.  
 R = 6425.70'  
 T = 139.41'  
 L = 278.78'  
 P.C. STA. 1108+65.69  
 P.T. STA. 1111+44.47

**CURVE CL16-A (OVERALL)**  
 P.I. STA. 1085+88.86  
 N = 1628431.3307  
 E = 538189.5253  
 $\Delta = 48^{\circ}44'41"$  RT.  
 R = 6425.70'  
 T = 2911.09'  
 L = 5466.70'  
 P.C. STA. 1056+77.77  
 P.T. STA. 1111+44.47

**CURVE SR429-2**  
 P.I. STA. 1154+88.17  
 $\Delta = 37^{\circ}07'54"$  LT.  
 R = 5729.58'  
 T = 1924.41'  
 L = 3713.16'  
 P.C. STA. 1135+63.76  
 P.T. STA. 1172+76.92

**CURVE CL203**  
 P.I. STA. 64+50.13  
 $\Delta = 72^{\circ}44'15"$  LT.  
 R = 1145.92'  
 T = 843.88'  
 L = 1454.76  
 P.C. STA. 56+06.25  
 P.T. STA. 70+61.00

TOWNSHIP 19 SOUTH, RANGE 30 EAST  
 SEE SHEET ONE FOR GENERAL NOTES AND LEGEND

PROJECT DESCRIPTION: S.R. 429 (WEKIVA PARKWAY) FROM ORANGE BOULEVARD TO EAST OF RINEHART ROAD

FILE: RWKVEN02.DGN JOB NO: 25007

RIGHT OF WAY MAP

FLORIDA DEPARTMENT OF TRANSPORTATION  
 SURVEYING AND MAPPING

APPROVED BY	DATE	BY	DATE
		PRELIM	C.SCHIELKE 06-20-13
		FINAL	C.SCHIELKE
		CHECKED	J. CHENEY 07-26-13

BY	DATE
PRELIM	C.SCHIELKE 06-20-13
FINAL	C.SCHIELKE
CHECKED	J. CHENEY 07-26-13

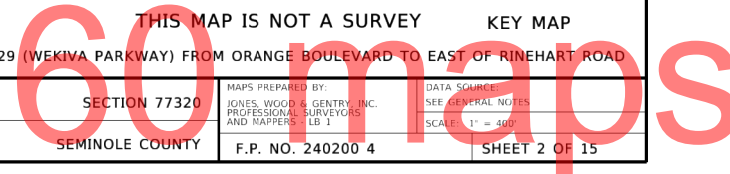
FED. PROJ. N.A.  
 STATE ROAD NO. 429 (WEKIVA PARKWAY)

SECTION 7320  
 SEMINOLE COUNTY

MAPS PREPARED BY:  
 JONES, WOOD & GENTRY, INC.  
 PROFESSIONAL SURVEYORS  
 AND MAPPERS - L.B. I

DATA SOURCE:  
 SEE GENERAL NOTES  
 SCALE: 1" = 400'

SHEET 2 OF 15





Curve SR429-2  
P.I. STA. 1154+88.17  
 $\Delta = 37^{\circ}07'54''$  LT.  
R = 5729.58'  
T = 1924.41'  
L = 3713.16'  
P.C. STA. 1135+63.76  
P.C.C. STA. 1172+76.92

Curve SR429-3  
P.I. STA. 1183+81.91  
 $\Delta = 16^{\circ}27'39''$  LT.  
R = 7639.44'  
T = 1104.99'  
L = 2194.76'  
P.C.C. STA. 1172+76.92  
P.T. STA. 1194+71.68

CURVE CL202  
P.I. STA. 47+00.73  
 $\Delta = 55^{\circ}12'47''$  RT.  
R = 1145.57'  
T = 599.06'  
L = 1103.93'  
P.C. STA. 41+01.68  
P.T. STA. 52+05.61

CURVE CL203  
P.I. STA. 64+50.13  
 $\Delta = 72^{\circ}44'15''$  LT.  
R = 1145.92'  
T = 843.88'  
L = 1454.76'  
P.C. STA. 56+06.25  
P.T. STA. 70+61.00

MONUMENT TABLE			
NO.	STATION	OFFSET	DESCRIPTION
DA29	M1	1150+77.82	749.53' LT. REC. 5/8" I.B.C. STAMPED "CFCS LB 6771"
DA29	M2	1152+35.83	823.66' LT. REC. 3/4" I.P. (NO ID)
DA25	M3	1152+35.90	834.34' LT. REC. 3/4" I.P.C. STAMPED "PLS 3764"
DA24	M4	1153+72.77	912.35' LT. REC. 1" I.P.C. STAMPED "TINKLEPAUGH LB 3778"
M5	70+61.00	70.00' RT.	SET 5/8" I.B.C. STAMPED "FDOT JWG LB 1"
RW246	M6	70+61.00	70.00' RT. REC. 4" X 4" C.M.D. (NO ID) N00°14'07"E 0.22' (F)
			SET 5/8" I.B.C. STAMPED "FDOT JWG LB 1"

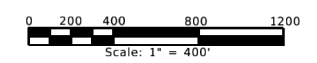
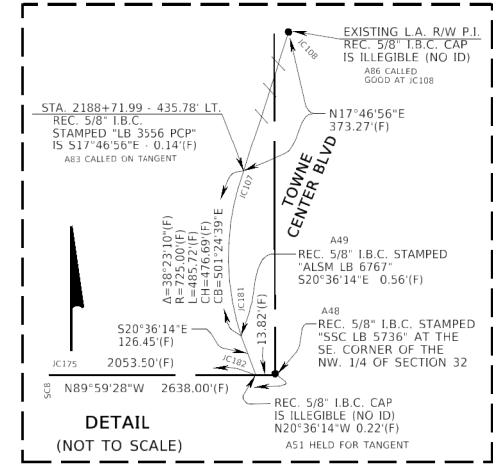
CURVE RK100  
P.I. STA. 2179+19.31  
 $\Delta = 10^{\circ}40'35''$  RT.  
R = 7639.09'  
T = 713.79'  
L = 1423.45'  
P.C. STA. 2172+05.52  
P.T. STA. 2186+28.96

CURVE RK101  
P.I. STA. 2154+16.42  
 $\Delta = 11^{\circ}41'33''$  LT.  
R = 5730.86'  
T = 586.79'  
L = 1169.50'  
P.C. STA. 2148+29.63  
P.T. STA. 2159+99.13

EQUATION STATION  
STA. 2144+50.00 BACK =  
STA. 2142+60.51 AHEAD

MONUMENT NOT SET OR RECOVERED  
N = 1623270.4062 E = 551970.2793

REC. 1/2" I.B. (NO ID) IN PAVEMENT CUTOUT AT THE NE. CORNER OF THE NW. 1/4 OF SECTION 33



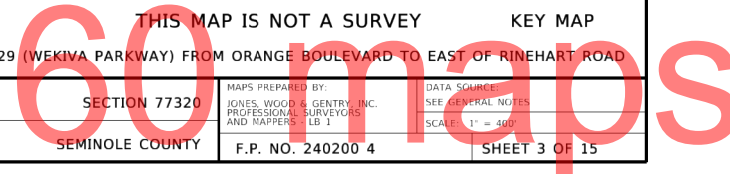
THIS MAP IS NOT A SURVEY KEY MAP

SEE SHEET ONE FOR GENERAL NOTES AND LEGEND

PROJECT DESCRIPTION: S.R. 429 (WEKIVA PARKWAY) FROM ORANGE BOULEVARD TO EAST OF RINEHART ROAD

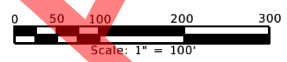
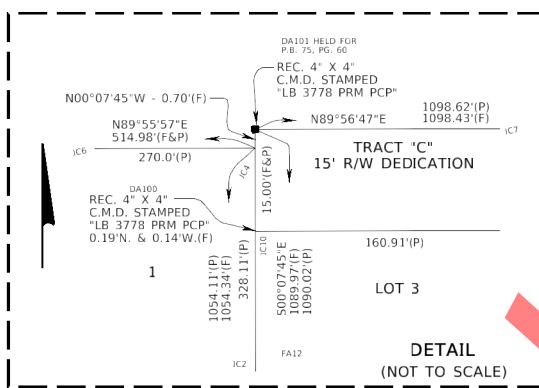
RIGHT OF WAY MAP	FLORIDA DEPARTMENT OF TRANSPORTATION SURVEYING AND MAPPING	APPROVED BY	DATE	BY	DATE	FED. PROJ. N.A.	SECTION 77320	MAPS PREPARED BY: JONES, WOOD & GENTRY, INC. PROFESSIONAL SURVEYORS AND MAPPERS - LB 1	DATA SOURCE: SEE GENERAL NOTES SCALE: 1" = 400'
		REVISION	BY	DATE	REVISION	BY	DATE	STATE ROAD NO. 429 (WEKIVA PARKWAY)	SEMINGOLE COUNTY

FILE: RWKVM03.DGN JOB NO.: 25007



SET NAIL AND DISC STAMPED "FDOT JWG LB 1" IN THE POSITION OF NAIL AND DISC STAMPED "LS2005" AS SHOWN ON WAYSIDE ESTATES P.B. 53, PG. 63

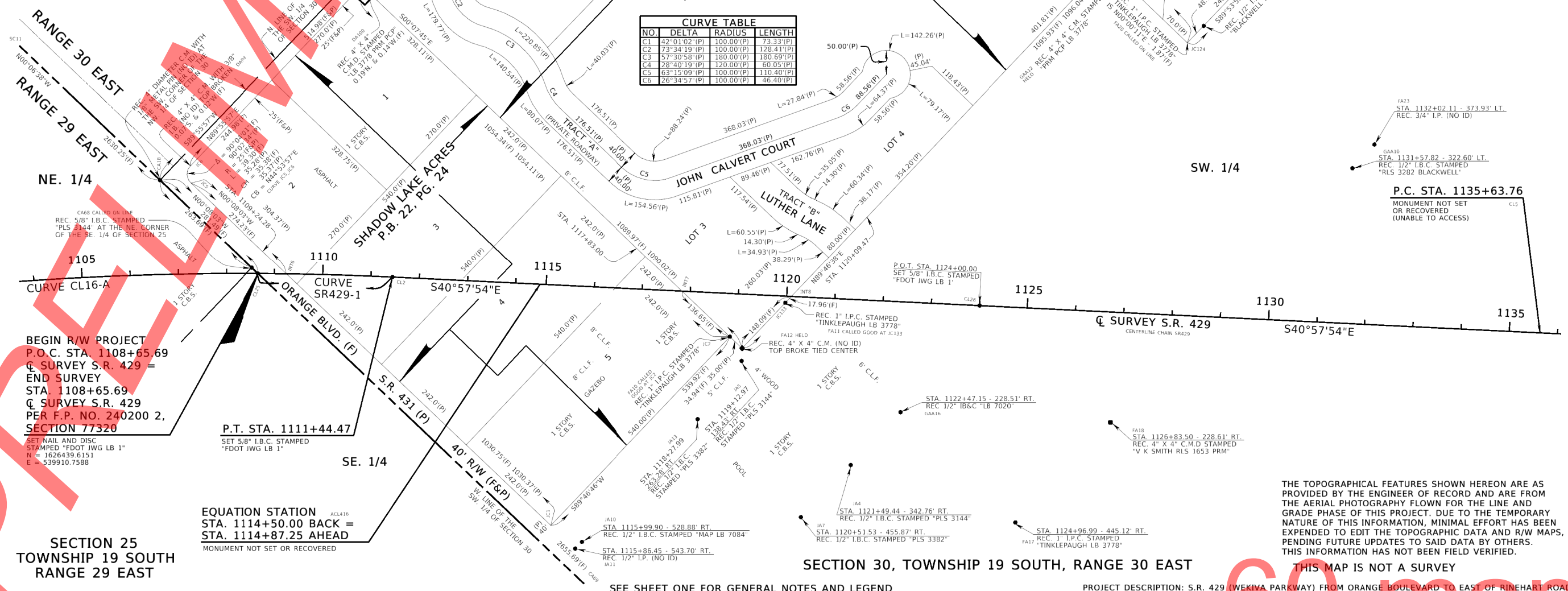
REC. 4" X 4" C.M.D. STAMPED "V.K. SMITH 1653 REG. LAND SURVEY" IS N89°56'47"E - 0.38'(F)



**CURVE CL16-A (OVERALL)**  
 P.I. STA. 1085+88.86  
 N = 1628431.3307  
 E = 538189.5253  
 Δ = 48°44'41" RT.  
 R = 6425.70'  
 T = 2911.09'  
 L = 5466.70'  
 P.C. STA. 1056+77.77  
 P.T. STA. 1111+44.47

**CURVE SR429-1**  
 P.I. STA. 1110+05.10  
 N = 1626338.4087  
 E = 540006.6351  
 Δ = 02°29'09" RT.  
 R = 6425.70'  
 T = 139.41'  
 L = 278.78'  
 P.C. STA. 1108+65.69  
 P.T. STA. 1111+44.47

NO.	DELTA	RADIUS	LENGTH
C1	42°01'02"(P)	100.00'(P)	73.33'(P)
C2	73°34'19"(P)	100.00'(P)	128.41'(P)
C3	57°30'58"(P)	180.00'(P)	180.69'(P)
C4	28°40'19"(P)	120.00'(P)	60.05'(P)
C5	63°15'09"(P)	100.00'(P)	110.40'(P)
C6	26°34'57"(P)	100.00'(P)	46.40'(P)



**BEGIN R/W PROJECT**  
 P.O.C. STA. 1108+65.69  
 Q SURVEY S.R. 429 =  
 END SURVEY  
 STA. 1108+65.69  
 Q SURVEY S.R. 429  
 PER F.P. NO. 240200 2,  
 SECTION 77320

P.T. STA. 1111+44.47  
 SET 5/8" I.B.C. STAMPED "FDOT JWG LB 1"

**EQUATION STATION**  
 STA. 1114+50.00 BACK =  
 STA. 1114+87.25 AHEAD  
 MONUMENT NOT SET OR RECOVERED

**SECTION 25**  
 TOWNSHIP 19 SOUTH  
 RANGE 29 EAST

**SECTION 30, TOWNSHIP 19 SOUTH, RANGE 30 EAST**

SEE SHEET ONE FOR GENERAL NOTES AND LEGEND

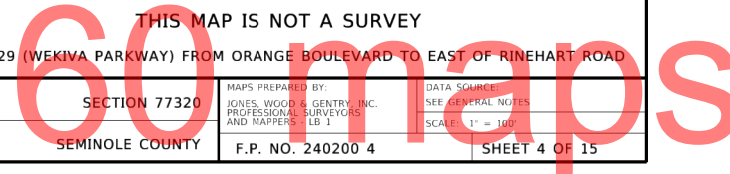
PROJECT DESCRIPTION: S.R. 429 (WEKIVA PARKWAY) FROM ORANGE BOULEVARD TO EAST OF RINEHART ROAD

THE TOPOGRAPHICAL FEATURES SHOWN HEREON ARE AS PROVIDED BY THE ENGINEER OF RECORD AND ARE FROM THE AERIAL PHOTOGRAPHY FLOWN FOR THE LINE AND GRADE PHASE OF THIS PROJECT. DUE TO THE TEMPORARY NATURE OF THIS INFORMATION, MINIMAL EFFORT HAS BEEN EXPENDED TO EDIT THE TOPOGRAPHIC DATA AND R/W MAPS, PENDING FUTURE UPDATES TO SAID DATA BY OTHERS. THIS INFORMATION HAS NOT BEEN FIELD VERIFIED.

THIS MAP IS NOT A SURVEY

RIGHT OF WAY MAP	FLORIDA DEPARTMENT OF TRANSPORTATION SURVEYING AND MAPPING	APPROVED BY	DATE	BY	DATE	FED. PROJ. N.A.	SECTION 77320	MAPS PREPARED BY: JONES, WOOD & GENTRY, INC. PROFESSIONAL SURVEYORS AND MAPPERS LB 1	DATA SOURCE: SEE GENERAL NOTES SCALE: 1" = 100'
		REVISION	BY	DATE	REVISION				

FILE: RWDET104.DGN JOB NO.: 25007





SECTION 30,  
TOWNSHIP 19 SOUTH,  
RANGE 30 EAST  
SW. 1/4

P.C. STA. 1135+63.76  
MONUMENT NOT SET OR RECOVERED  
(UNABLE TO ACCESS)

1135

S40°57'54"E CURVE SR429-2

1140

1145

1150

1155

1160

1165

1170

1175

1180

1185

1190

1195

1200

1205

1210

1215

1220

1225

1230

1235

1240

1245

1250

1255

1260

1265

1270

1275

1280

1285

1290

1295

1300

1305

1310

1315

1320

1325

1330

1335

1340

1345

1350

1355

1360

1365

1370

1375

1380

1385

1390

1395

1400

1405

1410

1415

1420

1425

1430

1435

1440

1445

1450

1455

1460

1465

1470

1475

1480

1485

1490

1495

1500

1505

1510

1515

1520

1525

1530

1535

1540

1545

1550

1555

1560

1565

1570

1575

1580

1585

1590

1595

1600

1605

1610

1615

1620

1625

1630

1635

1640

1645

1650

1655

1660

1665

1670

1675

1680

1685

1690

1695

1700

1705

1710

1715

1720

1725

1730

1735

1740

1745

1750

1755

1760

1765

1770

1775

1780

1785

1790

1795

1800

1805

1810

1815

1820

1825

1830

1835

1840

1845

1850

1855

1860

1865

1870

1875

1880

1885

1890

1895

1900

1905

1910

1915

1920

1925

1930

1935

1940

1945

1950

1955

1960

1965

1970

1975

1980

1985

1990

1995

2000

2005

2010

2015

2020

2025

2030

2035

2040

2045

2050

2055

2060

2065

2070

2075

2080

2085

2090

2095

2100

2105

2110

2115

2120

2125

2130

2135

2140

2145

2150

2155

2160

2165

2170

2175

2180

2185

2190

2195

2200

2205

2210

2215

2220

2225

2230

2235

2240

2245

2250

2255

2260

2265

2270

2275

2280

2285

2290

2295

2300

2305

2310

2315

2320

2325

2330

2335

2340

2345

2350

2355

2360

2365

2370

2375

2380

2385

2390

2395

2400

2405

2410

2415

2420

2425

2430

2435

2440

2445

2450

2455

2460

2465

2470

2475

2480

2485

2490

2495

2500

2505

2510

2515

2520

2525

2530

2535

2540

2545

2550

**CURVE CL203**  
 P.I. STA. 64+50.13  
 $\Delta = 72^\circ 44' 15''$  LT.  
 $R = 1145.92'$   
 $T = 843.88'$   
 $L = 1454.76'$   
 P.C. STA. 56+06.25  
 P.T. STA. 70+61.00

EXISTING R/W P.C.  
 STA. 56+06.25 - 70.00' LT.  
 SET 5/8" I.B.C. STAMPED  
 "FDOT JWG LB 1"  
 REC. 1" I.P. (NO ID) IS  
 $N72^\circ 58' 22''$  E - 0.18'(F)  
 REC. 4" X 4" C.M.D. (NO ID)  
 0.26'S. & 0.63'W.(F)

EXISTING R/W P.T.  
 STA. 52+05.61  
 70.00' LT.  
 C.M.D. (NO ID)  
 BA158 CALLED  
 GGGD AT RW234

EXISTING R/W P.T.  
 STA. 52+05.61  
 70.00' LT.  
 C.M.D. (NO ID)  
 BA158 CALLED  
 GGGD AT RW234

EXISTING R/W P.T.  
 STA. 52+05.61  
 70.00' LT.  
 C.M.D. (NO ID)  
 BA158 CALLED  
 GGGD AT RW234

EXISTING R/W P.T.  
 STA. 52+05.61  
 70.00' LT.  
 C.M.D. (NO ID)  
 BA158 CALLED  
 GGGD AT RW234

EXISTING R/W P.T.  
 STA. 52+05.61  
 70.00' LT.  
 C.M.D. (NO ID)  
 BA158 CALLED  
 GGGD AT RW234

EXISTING R/W P.T.  
 STA. 52+05.61  
 70.00' LT.  
 C.M.D. (NO ID)  
 BA158 CALLED  
 GGGD AT RW234

EXISTING R/W P.T.  
 STA. 52+05.61  
 70.00' LT.  
 C.M.D. (NO ID)  
 BA158 CALLED  
 GGGD AT RW234

EXISTING R/W P.T.  
 STA. 52+05.61  
 70.00' LT.  
 C.M.D. (NO ID)  
 BA158 CALLED  
 GGGD AT RW234

EXISTING R/W P.T.  
 STA. 52+05.61  
 70.00' LT.  
 C.M.D. (NO ID)  
 BA158 CALLED  
 GGGD AT RW234

EXISTING R/W P.T.  
 STA. 70+61.00 - 70.00' RT.  
 SET 5/8" I.B.C. STAMPED  
 "FDOT JWG LB 1"  
 REC. 4" X 4" C.M.D. (NO ID)  
 IS  $N00^\circ 14' 07''$  E - 0.22'(F)

EXISTING R/W P.C.  
 STA. 56+06.25 - 70.00' RT.  
 SET 5/8" I.B.C. STAMPED  
 "FDOT JWG LB 1"  
 REC. 1" I.P. (NO ID) IS  
 $N72^\circ 58' 22''$  E - 0.18'(F)  
 REC. 4" X 4" C.M.D. (NO ID)  
 0.26'S. & 0.63'W.(F)

EXISTING R/W P.C.  
 STA. 56+06.25 - 70.00' RT.  
 SET 5/8" I.B.C. STAMPED  
 "FDOT JWG LB 1"  
 REC. 1" I.P. (NO ID) IS  
 $N72^\circ 58' 22''$  E - 0.21'(F)

EXISTING R/W P.C.  
 STA. 56+06.25 - 70.00' RT.  
 SET 5/8" I.B.C. STAMPED  
 "FDOT JWG LB 1"  
 REC. 1" I.P. (NO ID) IS  
 $N72^\circ 58' 22''$  E - 0.21'(F)

EXISTING R/W P.C.  
 STA. 56+06.25 - 70.00' RT.  
 SET 5/8" I.B.C. STAMPED  
 "FDOT JWG LB 1"  
 REC. 1" I.P. (NO ID) IS  
 $N72^\circ 58' 22''$  E - 0.21'(F)

EXISTING R/W P.C.  
 STA. 56+06.25 - 70.00' RT.  
 SET 5/8" I.B.C. STAMPED  
 "FDOT JWG LB 1"  
 REC. 1" I.P. (NO ID) IS  
 $N72^\circ 58' 22''$  E - 0.21'(F)

EXISTING R/W P.C.  
 STA. 56+06.25 - 70.00' RT.  
 SET 5/8" I.B.C. STAMPED  
 "FDOT JWG LB 1"  
 REC. 1" I.P. (NO ID) IS  
 $N72^\circ 58' 22''$  E - 0.21'(F)

EXISTING R/W P.C.  
 STA. 56+06.25 - 70.00' RT.  
 SET 5/8" I.B.C. STAMPED  
 "FDOT JWG LB 1"  
 REC. 1" I.P. (NO ID) IS  
 $N72^\circ 58' 22''$  E - 0.21'(F)

EXISTING R/W P.C.  
 STA. 56+06.25 - 70.00' RT.  
 SET 5/8" I.B.C. STAMPED  
 "FDOT JWG LB 1"  
 REC. 1" I.P. (NO ID) IS  
 $N72^\circ 58' 22''$  E - 0.21'(F)

EXISTING R/W P.C.  
 STA. 56+06.25 - 70.00' RT.  
 SET 5/8" I.B.C. STAMPED  
 "FDOT JWG LB 1"  
 REC. 1" I.P. (NO ID) IS  
 $N72^\circ 58' 22''$  E - 0.21'(F)

EXISTING R/W P.C.  
 STA. 56+06.25 - 70.00' RT.  
 SET 5/8" I.B.C. STAMPED  
 "FDOT JWG LB 1"  
 REC. 1" I.P. (NO ID) IS  
 $N72^\circ 58' 22''$  E - 0.21'(F)

EXISTING R/W P.T.  
 STA. 70+61.00 - 70.00' RT.  
 SET 5/8" I.B.C. STAMPED  
 "FDOT JWG LB 1"  
 REC. 4" X 4" C.M.D. (NO ID)  
 IS  $N00^\circ 14' 07''$  E - 0.24'(F)

EXISTING R/W P.C.  
 STA. 70+61.00 - 70.00' RT.  
 SET 5/8" I.B.C. STAMPED  
 "FDOT JWG LB 1"  
 REC. 4" X 4" C.M.D. (NO ID)  
 IS  $N00^\circ 14' 07''$  E - 0.24'(F)

EXISTING R/W P.C.  
 STA. 70+61.00 - 70.00' RT.  
 SET 5/8" I.B.C. STAMPED  
 "FDOT JWG LB 1"  
 REC. 4" X 4" C.M.D. (NO ID)  
 IS  $N00^\circ 14' 07''$  E - 0.24'(F)

EXISTING R/W P.C.  
 STA. 70+61.00 - 70.00' RT.  
 SET 5/8" I.B.C. STAMPED  
 "FDOT JWG LB 1"  
 REC. 4" X 4" C.M.D. (NO ID)  
 IS  $N00^\circ 14' 07''$  E - 0.24'(F)

EXISTING R/W P.C.  
 STA. 70+61.00 - 70.00' RT.  
 SET 5/8" I.B.C. STAMPED  
 "FDOT JWG LB 1"  
 REC. 4" X 4" C.M.D. (NO ID)  
 IS  $N00^\circ 14' 07''$  E - 0.24'(F)

EXISTING R/W P.C.  
 STA. 70+61.00 - 70.00' RT.  
 SET 5/8" I.B.C. STAMPED  
 "FDOT JWG LB 1"  
 REC. 4" X 4" C.M.D. (NO ID)  
 IS  $N00^\circ 14' 07''$  E - 0.24'(F)

EXISTING R/W P.C.  
 STA. 70+61.00 - 70.00' RT.  
 SET 5/8" I.B.C. STAMPED  
 "FDOT JWG LB 1"  
 REC. 4" X 4" C.M.D. (NO ID)  
 IS  $N00^\circ 14' 07''$  E - 0.24'(F)

EXISTING R/W P.C.  
 STA. 70+61.00 - 70.00' RT.  
 SET 5/8" I.B.C. STAMPED  
 "FDOT JWG LB 1"  
 REC. 4" X 4" C.M.D. (NO ID)  
 IS  $N00^\circ 14' 07''$  E - 0.24'(F)

EXISTING R/W P.C.  
 STA. 70+61.00 - 70.00' RT.  
 SET 5/8" I.B.C. STAMPED  
 "FDOT JWG LB 1"  
 REC. 4" X 4" C.M.D. (NO ID)  
 IS  $N00^\circ 14' 07''$  E - 0.24'(F)

EXISTING R/W P.C.  
 STA. 70+61.00 - 70.00' RT.  
 SET 5/8" I.B.C. STAMPED  
 "FDOT JWG LB 1"  
 REC. 4" X 4" C.M.D. (NO ID)  
 IS  $N00^\circ 14' 07''$  E - 0.24'(F)

EXISTING R/W P.C.  
 STA. 70+61.00 - 70.00' RT.  
 SET 5/8" I.B.C. STAMPED  
 "FDOT JWG LB 1"  
 REC. 4" X 4" C.M.D. (NO ID)  
 IS  $N00^\circ 14' 07''$  E - 0.24'(F)

EXISTING R/W P.T.  
 STA. 70+61.00 - 70.00' RT.  
 SET 5/8" I.B.C. STAMPED  
 "FDOT JWG LB 1"  
 REC. 4" X 4" C.M.D. (NO ID)  
 IS  $N00^\circ 14' 07''$  E - 0.24'(F)

EXISTING R/W P.C.  
 STA. 70+61.00 - 70.00' RT.  
 SET 5/8" I.B.C. STAMPED  
 "FDOT JWG LB 1"  
 REC. 4" X 4" C.M.D. (NO ID)  
 IS  $N00^\circ 14' 07''$  E - 0.24'(F)

EXISTING R/W P.C.  
 STA. 70+61.00 - 70.00' RT.  
 SET 5/8" I.B.C. STAMPED  
 "FDOT JWG LB 1"  
 REC. 4" X 4" C.M.D. (NO ID)  
 IS  $N00^\circ 14' 07''$  E - 0.24'(F)

EXISTING R/W P.C.  
 STA. 70+61.00 - 70.00' RT.  
 SET 5/8" I.B.C. STAMPED  
 "FDOT JWG LB 1"  
 REC. 4" X 4" C.M.D. (NO ID)  
 IS  $N00^\circ 14' 07''$  E - 0.24'(F)

EXISTING R/W P.C.  
 STA. 70+61.00 - 70.00' RT.  
 SET 5/8" I.B.C. STAMPED  
 "FDOT JWG LB 1"  
 REC. 4" X 4" C.M.D. (NO ID)  
 IS  $N00^\circ 14' 07''$  E - 0.24'(F)

EXISTING R/W P.C.  
 STA. 70+61.00 - 70.00' RT.  
 SET 5/8" I.B.C. STAMPED  
 "FDOT JWG LB 1"  
 REC. 4" X 4" C.M.D. (NO ID)  
 IS  $N00^\circ 14' 07''$  E - 0.24'(F)

EXISTING R/W P.C.  
 STA. 70+61.00 - 70.00' RT.  
 SET 5/8" I.B.C. STAMPED  
 "FDOT JWG LB 1"  
 REC. 4" X 4" C.M.D. (NO ID)  
 IS  $N00^\circ 14' 07''$  E - 0.24'(F)

EXISTING R/W P.C.  
 STA. 70+61.00 - 70.00' RT.  
 SET 5/8" I.B.C. STAMPED  
 "FDOT JWG LB 1"  
 REC. 4" X 4" C.M.D. (NO ID)  
 IS  $N00^\circ 14' 07''$  E - 0.24'(F)

EXISTING R/W P.C.  
 STA. 70+61.00 - 70.00' RT.  
 SET 5/8" I.B.C. STAMPED  
 "FDOT JWG LB 1"  
 REC. 4" X 4" C.M.D. (NO ID)  
 IS  $N00^\circ 14' 07''$  E - 0.24'(F)

EXISTING R/W P.C.  
 STA. 70+61.00 - 70.00' RT.  
 SET 5/8" I.B.C. STAMPED  
 "FDOT JWG LB 1"  
 REC. 4" X 4" C.M.D. (NO ID)  
 IS  $N00^\circ 14' 07''$  E - 0.24'(F)

EXISTING R/W P.C.  
 STA. 70+61.00 - 70.00' RT.  
 SET 5/8" I.B.C. STAMPED  
 "FDOT JWG LB 1"  
 REC. 4" X 4" C.M.D. (NO ID)  
 IS  $N00^\circ 14' 07''$  E - 0.24'(F)

EXISTING R/W P.T.  
 STA. 70+61.00 - 70.00' RT.  
 SET 5/8" I.B.C. STAMPED  
 "FDOT JWG LB 1"  
 REC. 4" X 4" C.M.D. (NO ID)  
 IS  $N00^\circ 14' 07''$  E - 0.24'(F)

EXISTING R/W P.C.  
 STA. 70+61.00 - 70.00' RT.  
 SET 5/8" I.B.C. STAMPED  
 "FDOT JWG LB 1"  
 REC. 4" X 4" C.M.D. (NO ID)  
 IS  $N00^\circ 14' 07''$  E - 0.24'(F)

EXISTING R/W P.C.  
 STA. 70+61.00 - 70.00' RT.  
 SET 5/8" I.B.C. STAMPED  
 "FDOT JWG LB 1"  
 REC. 4" X 4" C.M.D. (NO ID)  
 IS  $N00^\circ 14' 07''$  E - 0.24'(F)

EXISTING R/W P.C.  
 STA. 70+61.00 - 70.00' RT.  
 SET 5/8" I.B.C. STAMPED  
 "FDOT JWG LB 1"  
 REC. 4" X 4" C.M.D. (NO ID)  
 IS  $N00^\circ 14' 07''$  E - 0.24'(F)

EXISTING R/W P.C.  
 STA. 70+61.00 - 70.00' RT.  
 SET 5/8" I.B.C. STAMPED  
 "FDOT JWG LB 1"  
 REC. 4" X 4" C.M.D. (NO ID)  
 IS  $N00^\circ 14' 07''$  E - 0.24'(F)

EXISTING R/W P.C.  
 STA. 70+61.00 - 70.00' RT.  
 SET 5/8" I.B.C. STAMPED  
 "FDOT JWG LB 1"  
 REC. 4" X 4" C.M.D. (NO ID)  
 IS  $N00^\circ 14' 07''$  E - 0.24'(F)

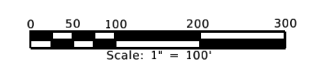
EXISTING R/W P.C.  
 STA. 70+61.00 - 70.00' RT.  
 SET 5/8" I.B.C. STAMPED  
 "FDOT JWG LB 1"  
 REC. 4" X 4" C.M.D. (NO ID)  
 IS  $N00^\circ 14' 07''$  E - 0.24'(F)

EXISTING R/W P.C.  
 STA. 70+61.00 - 70.00' RT.  
 SET 5/8" I.B.C. STAMPED  
 "FDOT JWG LB 1"  
 REC. 4" X 4" C.M.D. (NO ID)  
 IS  $N00^\circ 14' 07''$  E - 0.24'(F)

EXISTING R/W P.C.  
 STA. 70+61.00 - 70.00' RT.  
 SET 5/8" I.B.C. STAMPED  
 "FDOT JWG LB 1"  
 REC. 4" X 4" C.M.D. (NO ID)  
 IS  $N00^\circ 14' 07''$  E - 0.24'(F)

EXISTING R/W P.C.  
 STA. 70+61.00 - 70.00' RT.  
 SET 5/8" I.B.C. STAMPED  
 "FDOT JWG LB 1"  
 REC. 4" X 4" C.M.D. (NO ID)  
 IS  $N00^\circ 14' 07''$  E - 0.24'(F)

EXISTING R/W P.C.  
 STA. 70+61.00 - 70.00' RT.  
 SET 5/8" I.B.C. STAMPED  
 "FDOT JWG LB 1"  
 REC. 4" X 4" C.M.D. (NO ID)  
 IS  $N00^\circ 14' 07''$  E - 0.24'(F)



THIS AREA UNDER CONSTRUCTION. TOPOGRAPHY SHOWN IS OUT-OF-DATE AND NO LONGER VALID.

END R/W PROJECT I-4 CONNECTOR  
 STA. 5132+05.41 =  
 P.O.T. STA. 2816+14.73 S.R. 400  
 MONUMENT NOT SET OR RECOVERED  
 FALLS IN TRAVEL LANE  
 $N = 1622338.2777$   
 $E = 542489.0616$

THIS AREA UNDER CONSTRUCTION. TOPOGRAPHY SHOWN IS OUT-OF-DATE AND NO LONGER VALID.

THE TOPOGRAPHICAL FEATURES SHOWN HEREON ARE AS PROVIDED BY THE ENGINEER OF RECORD AND ARE FROM THE AERIAL PHOTOGRAPHY FLOWN FOR THE LINE AND GRADE PHASE OF THIS PROJECT. DUE TO THE TEMPORARY NATURE OF THIS INFORMATION, MINIMAL EFFORT HAS BEEN EXPENDED TO EDIT THE TOPOGRAPHIC DATA AND R/W MAPS, PENDING FUTURE UPDATES TO SAID DATA BY OTHERS. THIS INFORMATION HAS NOT BEEN FIELD VERIFIED.

SECTION 31, TOWNSHIP 19 SOUTH, RANGE 30 EAST

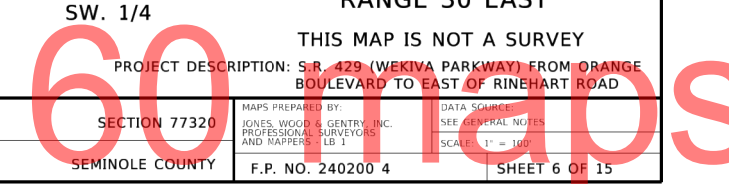
SECTION 32, TOWNSHIP 19 SOUTH, RANGE 30 EAST

THIS MAP IS NOT A SURVEY

PROJECT DESCRIPTION: S.R. 429 (WEKIVA PARKWAY) FROM ORANGE BOULEVARD TO EAST OF RINEHART ROAD

RIGHT OF WAY MAP	FLORIDA DEPARTMENT OF TRANSPORTATION SURVEYING AND MAPPING	APPROVED BY	DATE	BY	DATE	FED. PROJ. N.A.	SECTION 77320	MAPS PREPARED BY: JONES, WOOD & GENTRY, INC. PROFESSIONAL SURVEYORS AND MAPPERS - LB 1	DATA SOURCE: SEE GENERAL NOTES SCALE: 1" = 100'			
		REVISION	BY	DATE	REVISION	BY	DATE	CHECKED	J. CHENEY	07-26-13	STATE ROAD NO. 429 (WEKIVA PARKWAY)	SEMINEOLE COUNTY

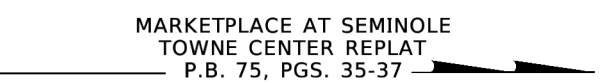
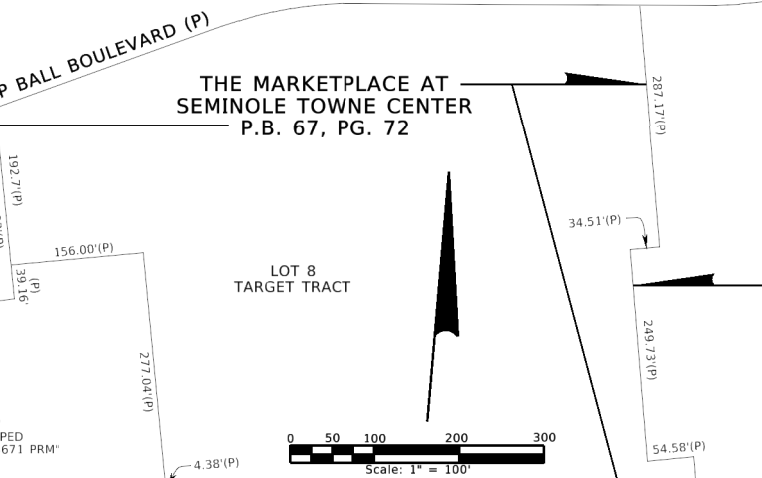
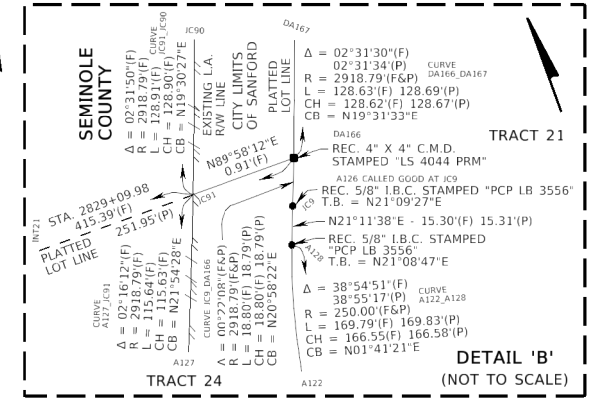
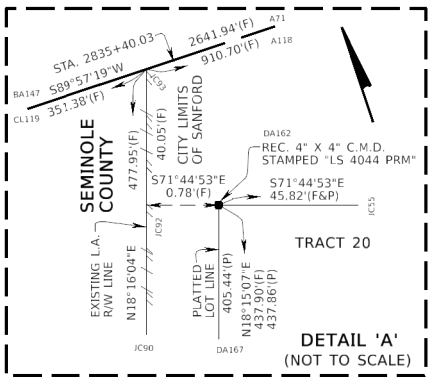
FILE: DWG2106.DGN  
 JOB NO.: 25000



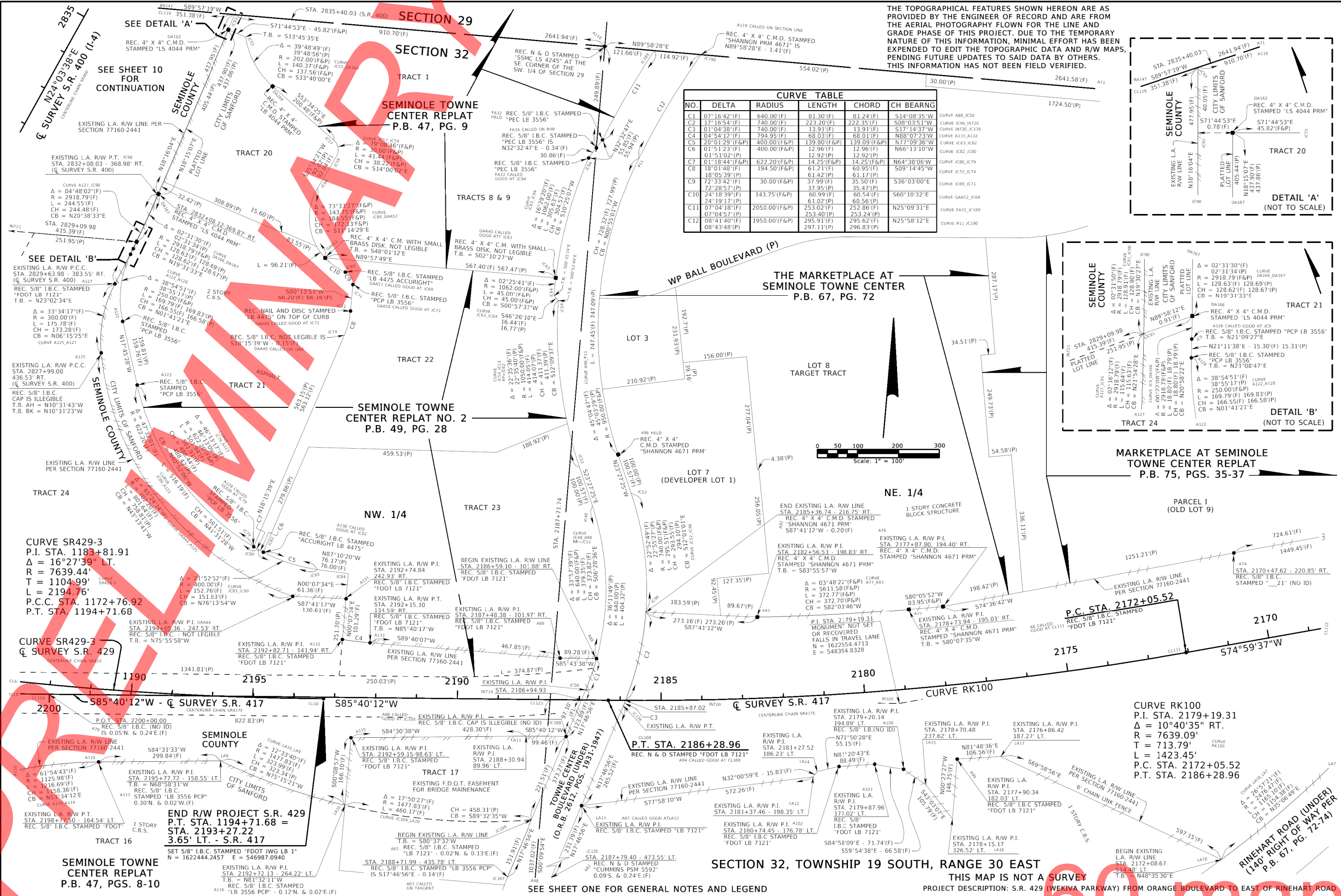


THE TOPOGRAPHICAL FEATURES SHOWN HEREON ARE AS PROVIDED BY THE ENGINEER OF RECORD AND ARE FROM THE AERIAL PHOTOGRAPHY FLOWN FOR THE LINE AND GRADE PHASE OF THIS PROJECT. DUE TO THE TEMPORARY NATURE OF THIS INFORMATION, MINIMAL EFFORT HAS BEEN EXPENDING TO EDIT THE TOPOGRAPHIC DATA AND R/W MAPS, PENDING FUTURE UPDATES TO SAID DATA BY OTHERS. THIS INFORMATION HAS NOT BEEN FIELD VERIFIED.

NO.	DELTA	RADIUS	LENGTH	CHORD	CH BEARING
C1	07°16'42"(F)	640.00'(F)	81.30'(F)	81.24'(F)	S14°08'35"W
C2	17°16'54"(F)	740.00'(F)	223.20'(F)	222.35'(F)	S08°03'51"W
C3	01°04'38"(F)	740.00'(F)	13.91'(F)	13.91'(F)	S17°14'37"W
C4	04°54'12"(F)	794.95'(F)	68.03'(F)	68.01'(F)	N88°07'23"W
C5	20°01'29"(F&P)	400.00'(F&P)	139.80'(F&P)	139.09'(F&P)	N77°09'36"W
C6	01°51'23"(F)	400.00'(F&P)	12.96'(F)	12.96'(F)	N66°13'10"W
C7	01°18'44"(F&P)	622.20'(F&P)	14.25'(F&P)	14.25'(F&P)	N64°38'06"W
C8	18°01'48"(F)	194.50'(F&P)	61.21'(F)	60.95'(F)	S09°14'45"W
C9	72°33'42"(F)	30.00'(F&P)	37.99'(F)	35.50'(F)	S36°03'00"E
C10	24°18'39"(F)	143.75'(F&P)	60.99'(F)	60.54'(F)	S60°10'32"E
C11	07°04'18"(F)	2050.00'(F&P)	253.02'(F)	252.86'(F)	N25°09'31"E
C12	08°41'40"(F)	1950.00'(F&P)	295.91'(F)	295.62'(F)	N25°58'12"E



Scale: 1" = 100'



**CURVE SR429-3**  
P.I. STA. 1183+81.91  
 $\Delta = 16^{\circ}27'39"$  LT.  
R = 7639.44'  
T = 1104.99'  
L = 2194.76'  
P.C. STA. 1172+76.92  
P.T. STA. 1194+71.68

**CURVE SR429-3**  
 $\Delta = 16^{\circ}27'39"$  LT.  
R = 7639.44'  
T = 1104.99'  
L = 2194.76'  
P.C. STA. 1172+76.92  
P.T. STA. 1194+71.68

**CURVE RK100**  
P.I. STA. 2179+19.31  
 $\Delta = 10^{\circ}40'35"$  RT.  
R = 7639.09'  
T = 713.79'  
L = 1423.45'  
P.C. STA. 2172+05.52  
P.T. STA. 2186+28.96

**SEMINOLE TOWNE CENTER REPLAT P.B. 47, PGS. 8-10**

**SECTION 32, TOWNSHIP 19 SOUTH, RANGE 30 EAST**

**THIS MAP IS NOT A SURVEY**  
PROJECT DESCRIPTION: S.R. 429 (WEKIVA PARKWAY) FROM ORANGE BOULEVARD TO EAST OF RINEHART ROAD

**RIGHT OF WAY MAP**

FLORIDA DEPARTMENT OF TRANSPORTATION  
SURVEYING AND MAPPING

APPROVED BY	DATE	BY	DATE
JONES, WOOD & GENTRY, INC.	06-20-13	C. SCHIELKE	06-20-13
C. SCHIELKE		J. CHENEY	07-26-13

PRELIM C. SCHIELKE 06-20-13  
FINAL C. SCHIELKE  
CHECKED J. CHENEY 07-26-13

FED. PROJ. N.A.  
STATE ROAD NO. 429 (WEKIVA PARKWAY)

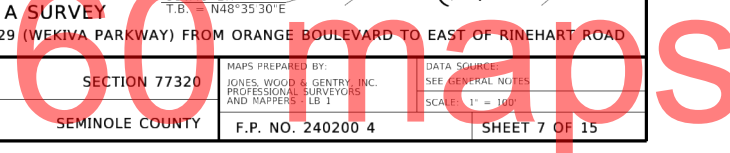
SECTION 77320  
SEMINOLE COUNTY

MAPS PREPARED BY:  
JONES, WOOD & GENTRY, INC.  
PROFESSIONAL SURVEYORS  
AND MAPPERS - L.B. I

DATA SOURCE:  
SEE GENERAL NOTES  
SCALE: 1" = 100'

F.P. NO. 240200 4  
SHEET 7 OF 15

FILE: 04/02/07.DGN  
JOB NO.: 25007



THE MARKETPLACE AT SEMINOLE TOWNE CENTER P.B. 67, PG. 72

MARKETPLACE AT SEMINOLE TOWNE CENTER REPLAT P.B. 75, PGS. 35-37

SECTION 32, TOWNSHIP 19 SOUTH, RANGE 30 EAST

SECTION 33, TOWNSHIP 19 SOUTH, RANGE 30 EAST

THE TOPOGRAPHICAL FEATURES SHOWN HEREON ARE AS PROVIDED BY THE ENGINEER OF RECORD AND ARE FROM THE AERIAL PHOTOGRAPHY FLOWN FOR THE LINE AND GRADE PHASE OF THIS PROJECT. DUE TO THE TEMPORARY NATURE OF THIS INFORMATION, MINIMAL EFFORT HAS BEEN EXPENDED TO EDIT THE TOPOGRAPHIC DATA AND R/W MAPS, PENDING FUTURE UPDATES TO SAID DATA BY OTHERS. THIS INFORMATION HAS NOT BEEN FIELD VERIFIED.

FILE: DWG2109.DGN  
JOB NO.: 24020

RIGHT OF WAY MAP

FLORIDA DEPARTMENT OF TRANSPORTATION  
SURVEYING AND MAPPING

APPROVED BY	DATE	BY	DATE
		PRELIM	06-20-13
		FINAL	
		CHECKED	07-26-13

BY	DATE
C.SCHIELKE	06-20-13
C.SCHIELKE	
J.CHENEY	07-26-13

FED. PROJ. N.A.  
STATE ROAD NO. 429 (WEKIVA PARKWAY)

SECTION 77320  
SEMINOLE COUNTY

MAPS PREPARED BY:  
JONES, WOOD & GENTRY, INC.  
PROFESSIONAL SURVEYORS  
AND MAPPERS - LB 1

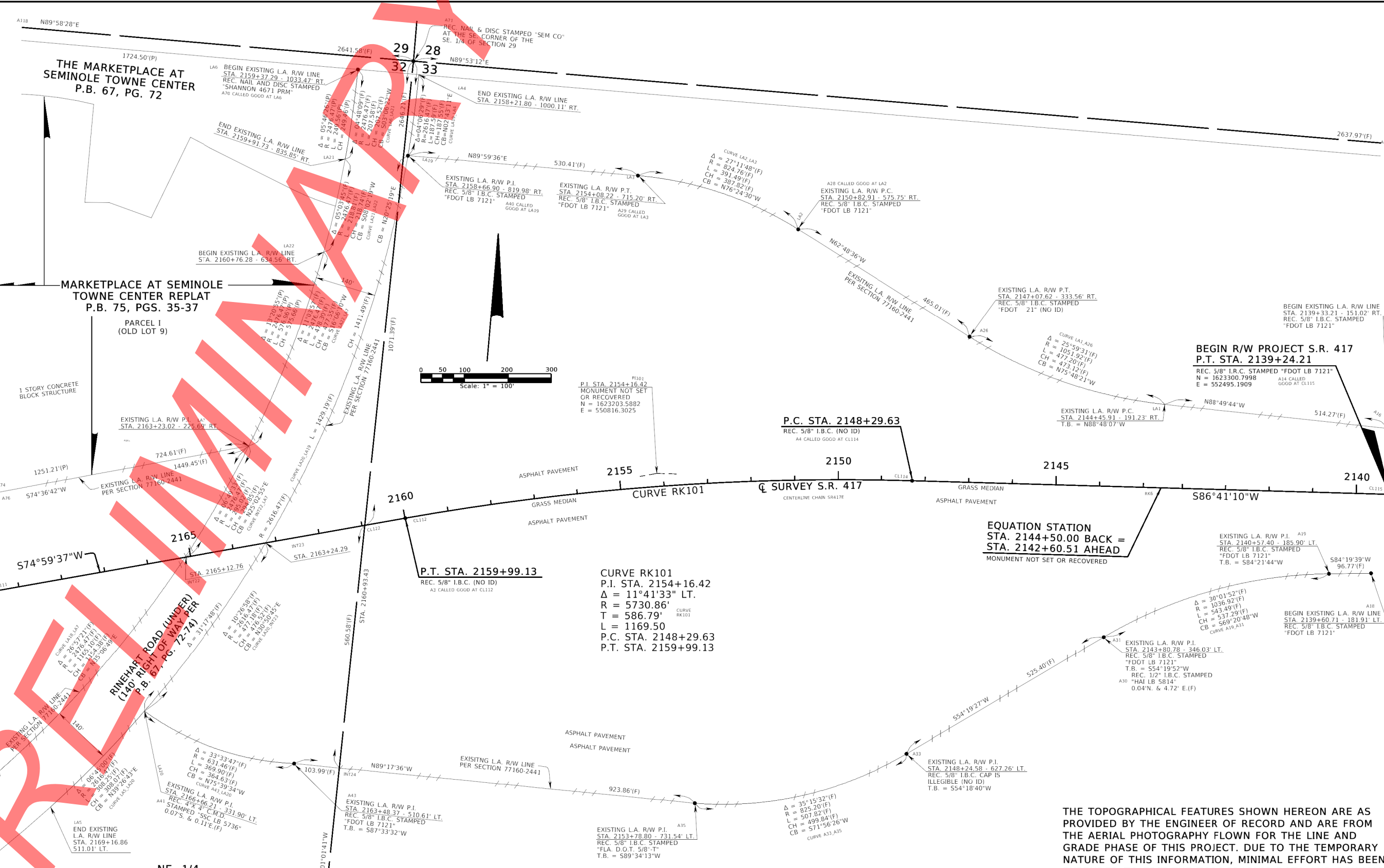
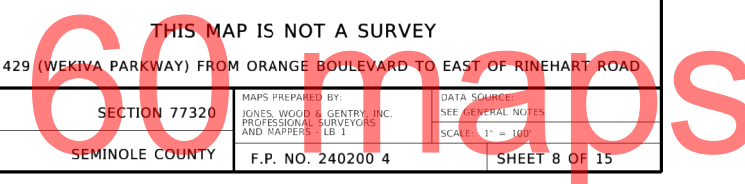
DATA SOURCE:  
SEE GENERAL NOTES  
SCALE: 1" = 100'

F.P. NO. 240200 4  
SHEET 8 OF 15

SEE SHEET ONE FOR GENERAL NOTES AND LEGEND

PROJECT DESCRIPTION: S.R. 429 (WEKIVA PARKWAY) FROM ORANGE BOULEVARD TO EAST OF RINEHART ROAD

THIS MAP IS NOT A SURVEY





SECTION 31, TOWNSHIP 19 SOUTH, RANGE 30 EAST

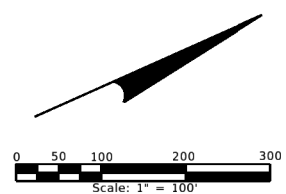
SE. 1/4

SEE SHEET 6 FOR CONTINUATION

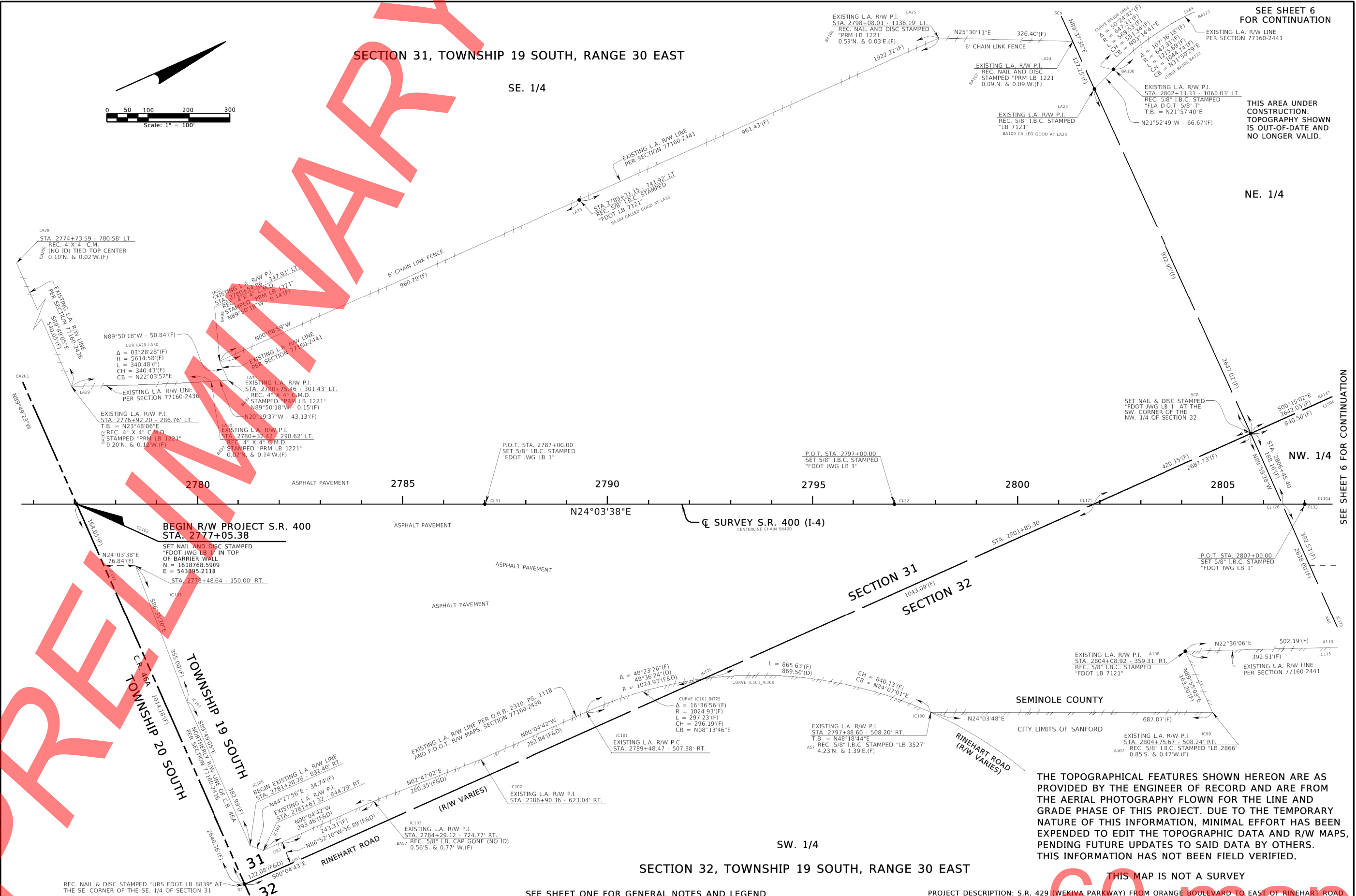
NE. 1/4

NW. 1/4

SEE SHEET 6 FOR CONTINUATION



THIS AREA UNDER CONSTRUCTION. TOPOGRAPHY SHOWN IS OUT-OF-DATE AND NO LONGER VALID.



BEGIN R/W PROJECT S.R. 400  
STA. 2777+05.38

CL SURVEY S.R. 400 (I-4)  
CENTERLINE CHAIN 58400

SECTION 31  
SECTION 32

SEMINOLE COUNTY

CITY LIMITS OF SANFORD

RINEHART ROAD  
(R/W VARIES)

SECTION 32, TOWNSHIP 19 SOUTH, RANGE 30 EAST

SW. 1/4

THE TOPOGRAPHICAL FEATURES SHOWN HEREON ARE AS PROVIDED BY THE ENGINEER OF RECORD AND ARE FROM THE AERIAL PHOTOGRAPHY FLOWN FOR THE LINE AND GRADE PHASE OF THIS PROJECT. DUE TO THE TEMPORARY NATURE OF THIS INFORMATION, MINIMAL EFFORT HAS BEEN EXPENDED TO EDIT THE TOPOGRAPHIC DATA AND R/W MAPS, PENDING FUTURE UPDATES TO SAID DATA BY OTHERS. THIS INFORMATION HAS NOT BEEN FIELD VERIFIED.

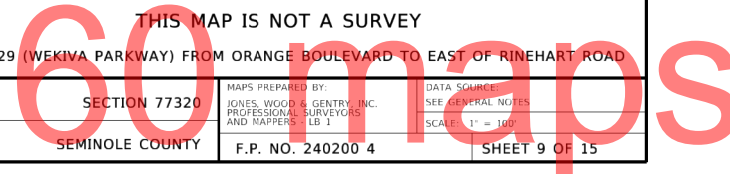
THIS MAP IS NOT A SURVEY

SEE SHEET ONE FOR GENERAL NOTES AND LEGEND

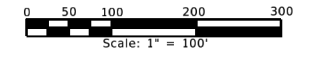
PROJECT DESCRIPTION: S.R. 429 (WEKIVA PARKWAY) FROM ORANGE BOULEVARD TO EAST OF RINEHART ROAD

FILE: DWG109.DGN  
JOB NO.: 25007

RIGHT OF WAY MAP	FLORIDA DEPARTMENT OF TRANSPORTATION SURVEYING AND MAPPING	APPROVED BY	DATE	BY	DATE	FED. PROJ. N.A.	SECTION 77320	MAPS PREPARED BY: JONES, WOOD & GENTRY, INC. PROFESSIONAL SURVEYORS AND MAPPERS - LB 1	DATA SOURCE: SEE GENERAL NOTES SCALE: 1" = 100'
		REVISION	BY	DATE	REVISION				



THE TOPOGRAPHICAL FEATURES SHOWN HEREON ARE AS PROVIDED BY THE ENGINEER OF RECORD AND ARE FROM THE AERIAL PHOTOGRAPHY FLOWN FOR THE LINE AND GRADE PHASE OF THIS PROJECT. DUE TO THE TEMPORARY NATURE OF THIS INFORMATION, MINIMAL EFFORT HAS BEEN EXPENDED TO EDIT THE TOPOGRAPHIC DATA AND R/W MAPS, PENDING FUTURE UPDATES TO SAID DATA BY OTHERS. THIS INFORMATION HAS NOT BEEN FIELD VERIFIED.



SECTION 32, TOWNSHIP 19 SOUTH, RANGE 30 EAST

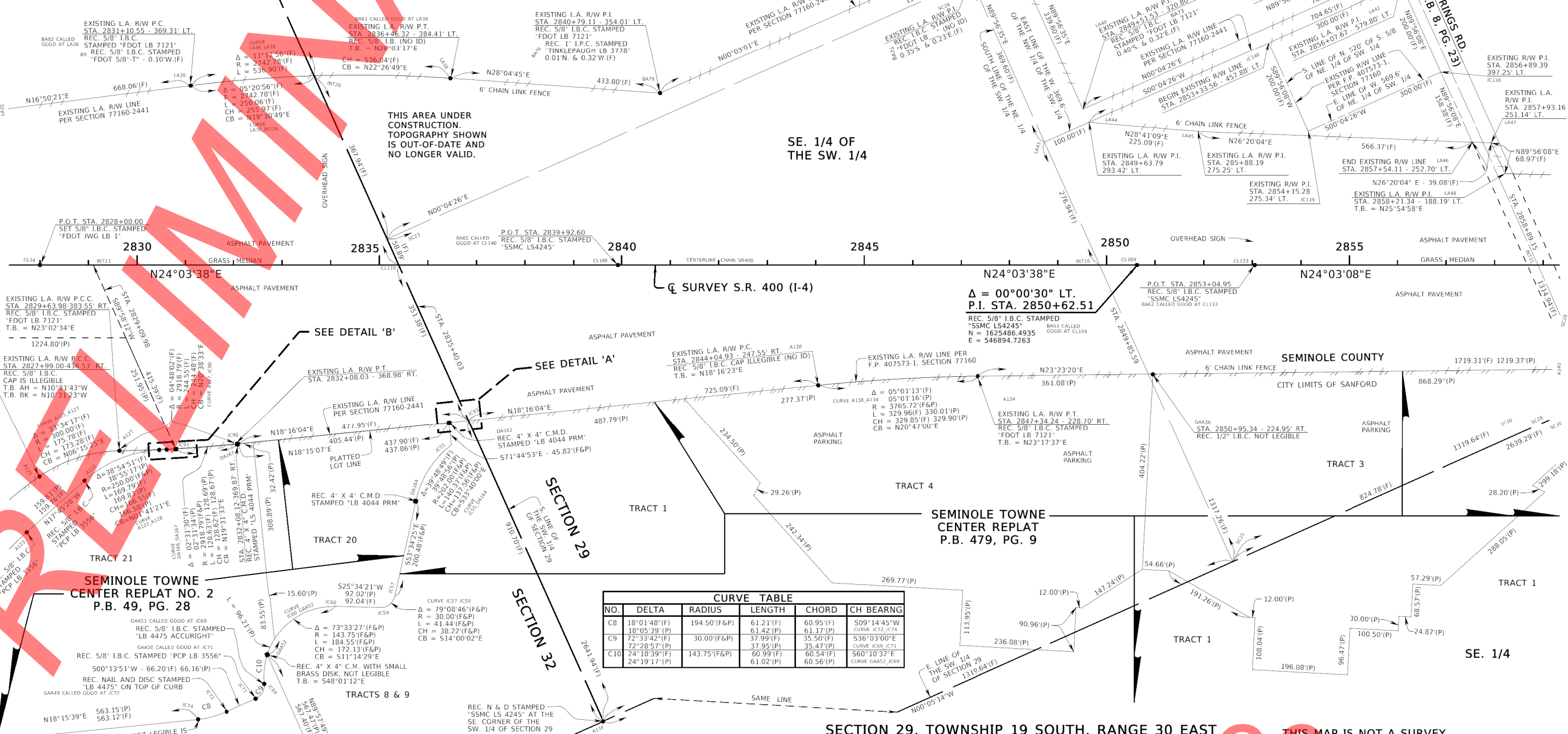
NW. 1/4

SW. 1/4 OF THE SW. 1/4

SE. 1/4 OF THE SW. 1/4

NE. 1/4 OF THE SW. 1/4

SEE SHEETS 6 & 7 FOR CONTINUATION



NO.	DELTA	RADIUS	LENGTH	CHORD	CH BEARING
C8	18°01'48"(F)	194.50'(F&P)	61.21'(F)	60.95'(F)	S09°14'45"W CURVE IC72, IC74
C9	72°33'42"(F)	30.00'(F&P)	37.99'(F)	35.50'(F)	S36°03'00"E CURVE IC59, IC71
C10	24°18'39"(F)	143.75'(F&P)	60.99'(F)	60.54'(F)	S60°10'32"E CURVE GA52, IC69

RIGHT OF WAY MAP

FLORIDA DEPARTMENT OF TRANSPORTATION  
SURVEYING AND MAPPING

APPROVED BY	DATE	REVISION	BY	DATE

BY	DATE
PRELIM C.SCHIELKE	06-20-13
FINAL C.SCHIELKE	
CHECKED J.CHENEY	07-26-13

FED. PROJ. N.A.  
STATE ROAD NO. 429 (WEKIVA PARKWAY)

SECTION 77320  
SEMINOLE COUNTY

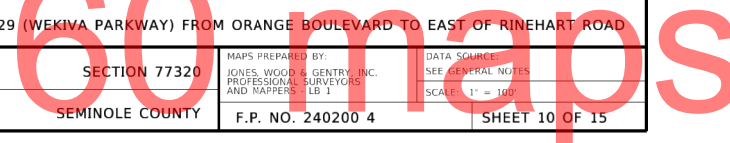
F.P. NO. 240200 4  
SHEET 10 OF 15

SECTION 29, TOWNSHIP 19 SOUTH, RANGE 30 EAST

THIS MAP IS NOT A SURVEY

SEE SHEET ONE FOR GENERAL NOTES AND LEGEND

FILE: I:\PROJECTS\10.DWG JOB NO.: 25007





SECTION 29, TOWNSHIP 19 SOUTH, RANGE 30 EAST

SEE SHEET 2 FOR ADDITIONAL INFORMATION

NW. 1/4 OF THE SW. 1/4

NE. 1/4 OF THE SW. 1/4

NW. 1/4

NE. 1/4

SE. 1/4

NO.	DELTA	RADIUS	LENGTH	CHORD	CH BEARING
C1	90°52'13"(F) 90°28'40"(P)	25.00'(F) 25.00'(P)	39.65'(F) 39.48'(P)	35.62'(F)	N05°00'46"W
C2	49°41'43"(F) 49°39'42"(P)	189.85'(F) 189.85'(P)	164.67'(F) 164.55'(P)	159.55'(F)	N65°04'59"E
C3	76°22'47"(F) 76°22'16"(P)	112.00'(F) 112.00'(P)	149.30'(F) 149.29'(P)	138.49'(F)	N51°44'27"E
C4	49°42'16"(F) 00°04'35"(F)	289.85'(F) 5729.58'(F)	251.45'(F) 7.64'(F)	243.64'(F) 7.64'(F)	N65°05'15"E N23°32'55"E
C5	00°04'41"(P) 03°56'04"(F)	5729.58'(P) 1382.39'(F)	7.80'(P) 94.92'(F)	7.80'(P) 94.91'(F)	N23°32'55"E N32°52'16"E

SECTION 29, TOWNSHIP 19 SOUTH, RANGE 30 EAST

SEE SHEET ONE FOR GENERAL NOTES AND LEGEND

THIS AREA UNDER CONSTRUCTION. TOPOGRAPHY SHOWN IS OUT-OF-DATE AND NO LONGER VALID.

P.O.T. STA. 2876+39.48  
S.R. 400 (I-4) = EQUATION STATION - S.R. 46  
 $\Delta = 00°01'35"$  LT.  
P.I. STA. 271+45.61 BACK =  
P.I. STA. 77+74.59 AHEAD =  
MONUMENT NOT SET OR RECOVERED  
N = 1627839.7216 E = 547945.0275

STA. 86+54.63 = END SURVEY S.R. 46  
STA. 86+54.63  
F.P. NO. 2402003,  
SECTION 77030  
MONUMENT NOT SET OR RECOVERED  
N = 1627840.6474  
E = 548825.0643

THE TOPOGRAPHICAL FEATURES SHOWN HEREON ARE AS PROVIDED BY THE ENGINEER OF RECORD AND ARE FROM THE AERIAL PHOTOGRAPHY FLOWN FOR THE LINE AND GRADE PHASE OF THIS PROJECT. DUE TO THE TEMPORARY NATURE OF THIS INFORMATION, MINIMAL EFFORT HAS BEEN EXPENDED TO EDIT THE TOPOGRAPHIC DATA AND R/W MAPS, PENDING FUTURE UPDATES TO SAID DATA BY OTHERS. THIS INFORMATION HAS NOT BEEN FIELD VERIFIED.

THIS MAP IS NOT A SURVEY

PROJECT DESCRIPTION: S.R. 429 (WEKIVA PARKWAY) FROM ORANGE BOULEVARD TO EAST OF RINEHART ROAD

SECTION 77320  
SEMINOLE COUNTY

F.P. NO. 240200 4  
SHEET 11 OF 15

RIGHT OF WAY MAP

FLORIDA DEPARTMENT OF TRANSPORTATION  
SURVEYING AND MAPPING

APPROVED BY	DATE	BY	DATE
PRELIM	C.SCHIELKE	06-20-13	
FINAL	C.SCHIELKE		
CHECKED	J.CHENEY	07-26-13	

BY	DATE
PRELIM	C.SCHIELKE 06-20-13
FINAL	C.SCHIELKE
CHECKED	J.CHENEY 07-26-13

FED. PROJ. N.A.  
STATE ROAD NO. 429 (WEKIVA PARKWAY)

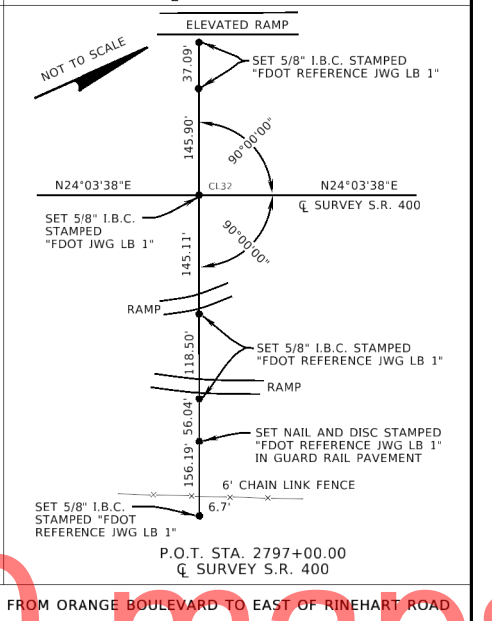
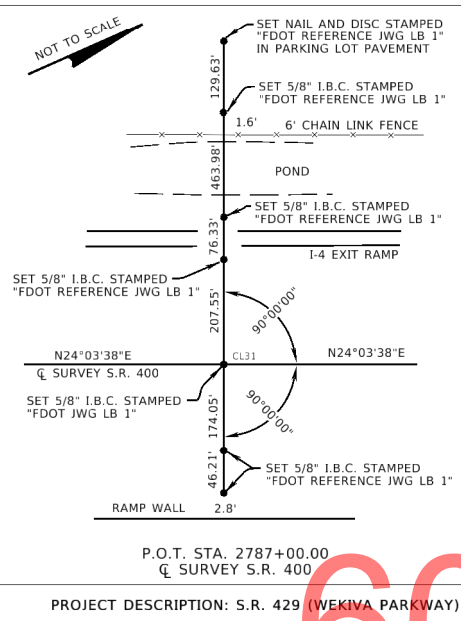
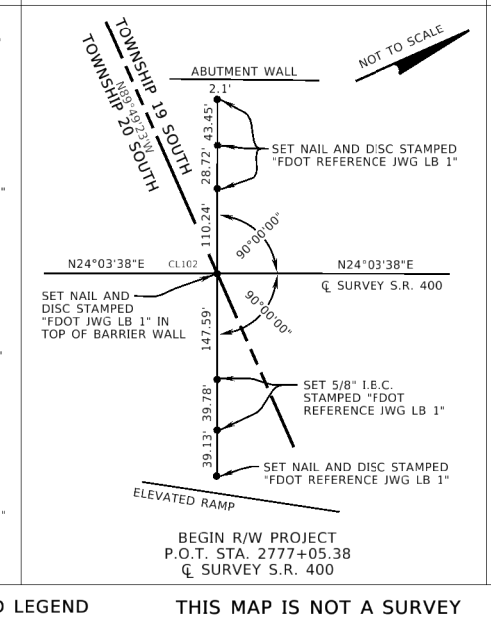
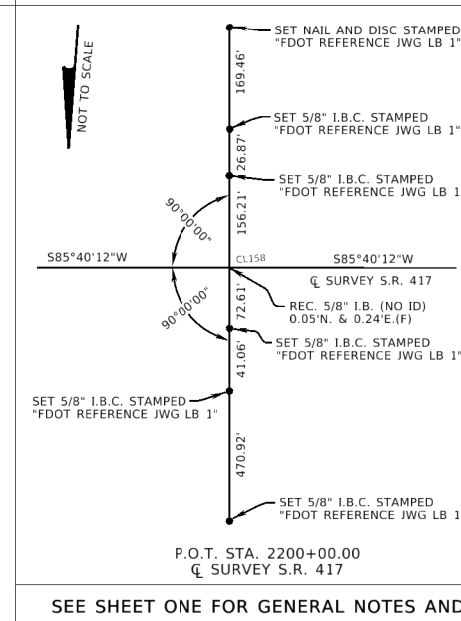
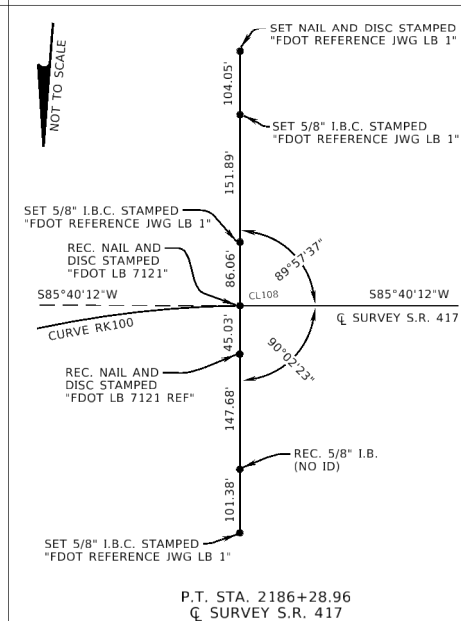
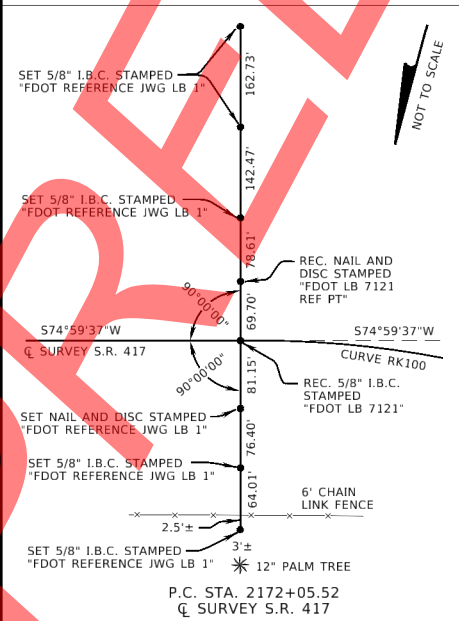
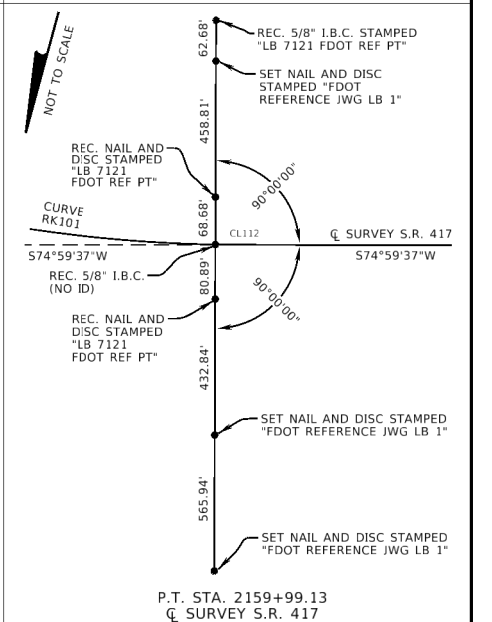
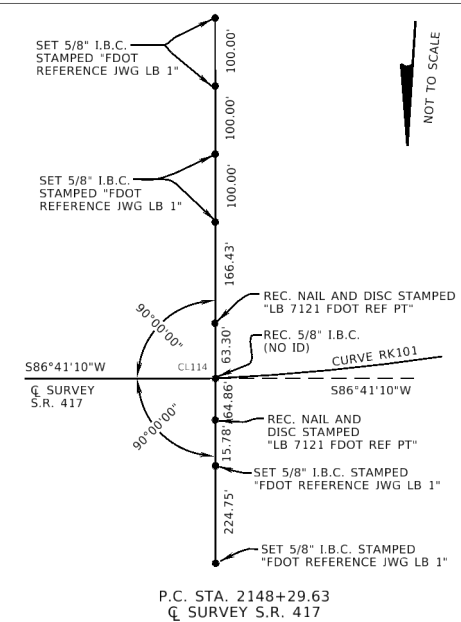
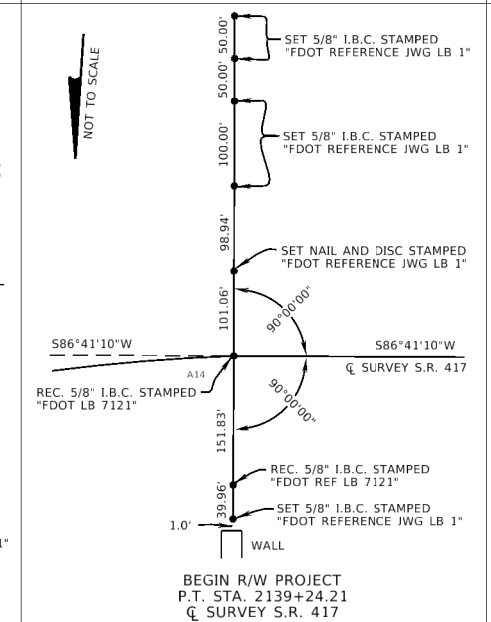
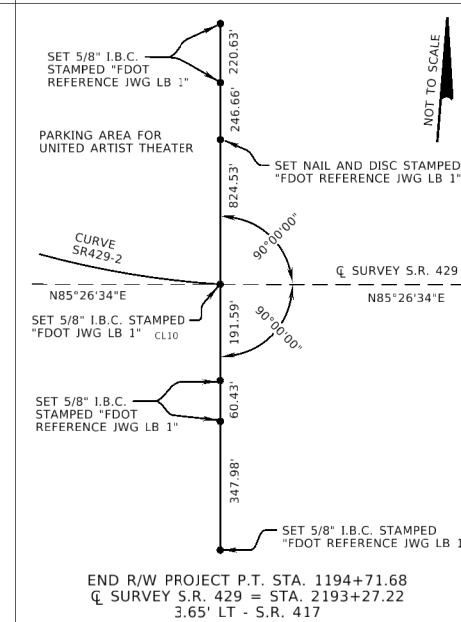
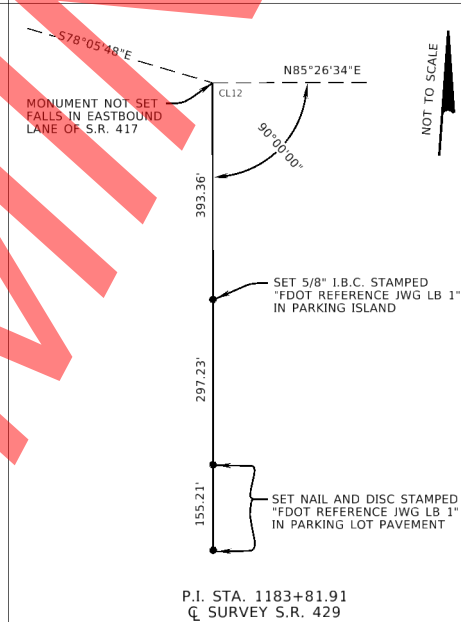
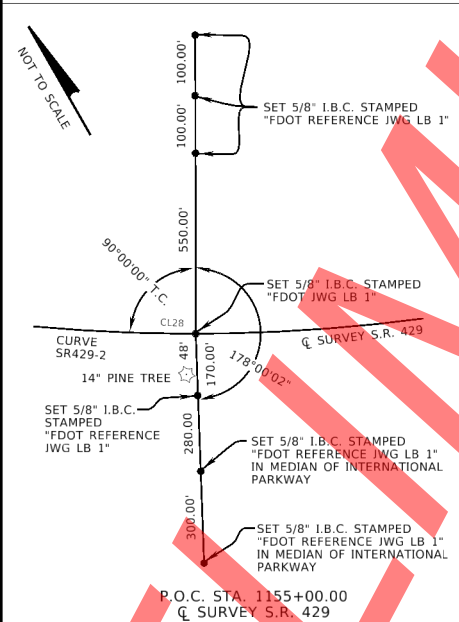
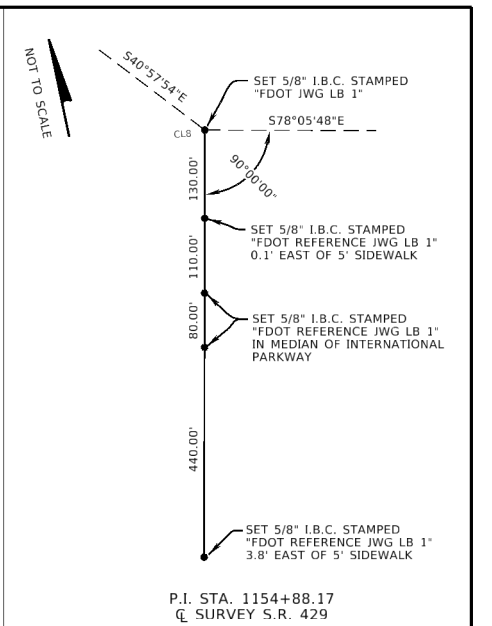
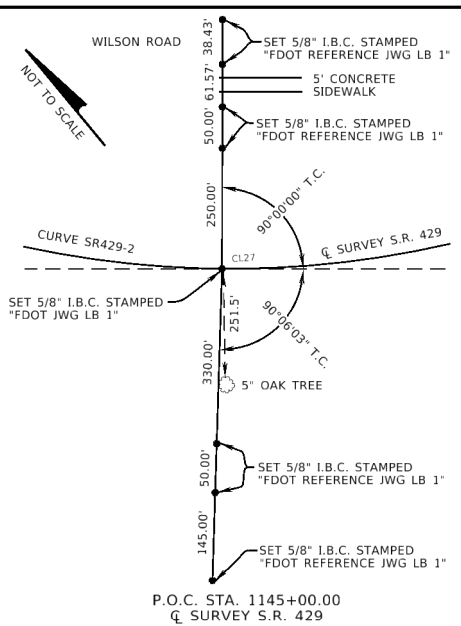
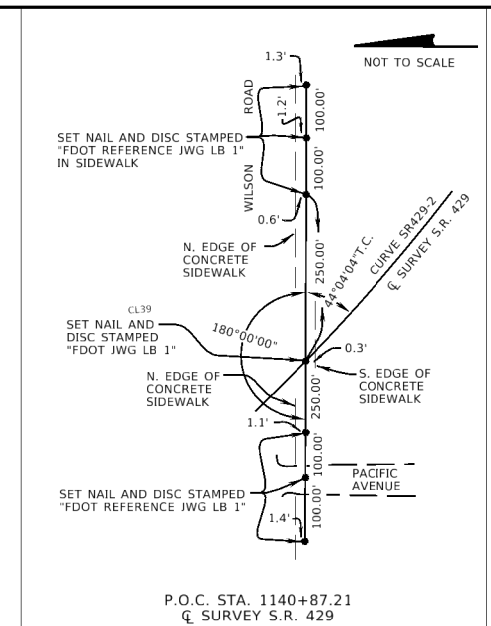
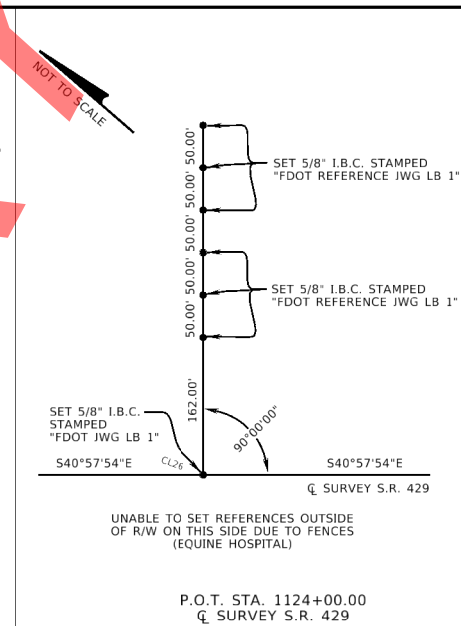
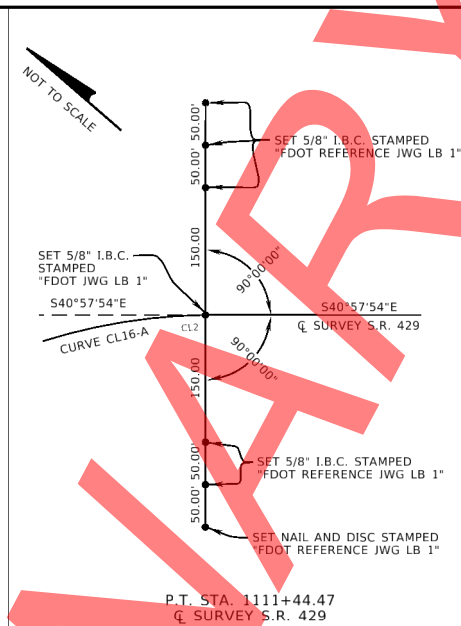
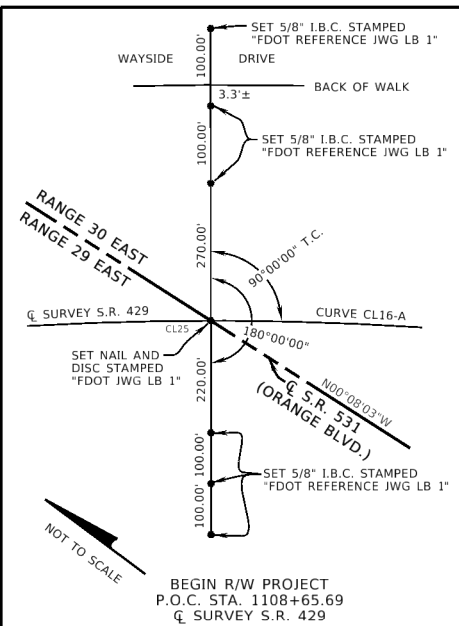
MAPS PREPARED BY:  
JONES, WOOD & GENTRY, INC.  
PROFESSIONAL SURVEYORS  
AND MAPPERS - L.B. I

DATA SOURCE:  
SEE GENERAL NOTES  
SCALE: 1" = 100'

FILE: RW02ETL11.DGN  
JOB NO.: 25007







FILE: DWG0113.DWG  
JOB NO.: 25007

**RIGHT OF WAY MAP**

FLORIDA DEPARTMENT OF TRANSPORTATION  
SURVEYING AND MAPPING

APPROVED BY	DATE	BY	DATE
REVISION	BY	DATE	REVISION

SEE SHEET ONE FOR GENERAL NOTES AND LEGEND

THIS MAP IS NOT A SURVEY

PROJECT DESCRIPTION: S.R. 429 (WEKIVA PARKWAY) FROM ORANGE BOULEVARD TO EAST OF RINEHART ROAD

PRELIM	C.SCHIELKE	06-20-13
FINAL	C.SCHIELKE	
CHECKED	J. CHENEY	07-26-13

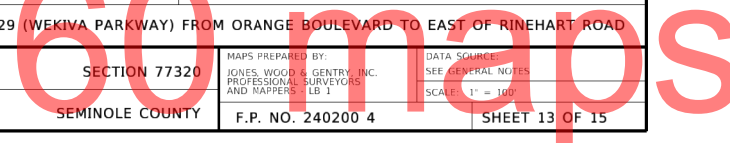
FED. PROJ. N.A.  
STATE ROAD NO. 429 (WEKIVA PARKWAY)

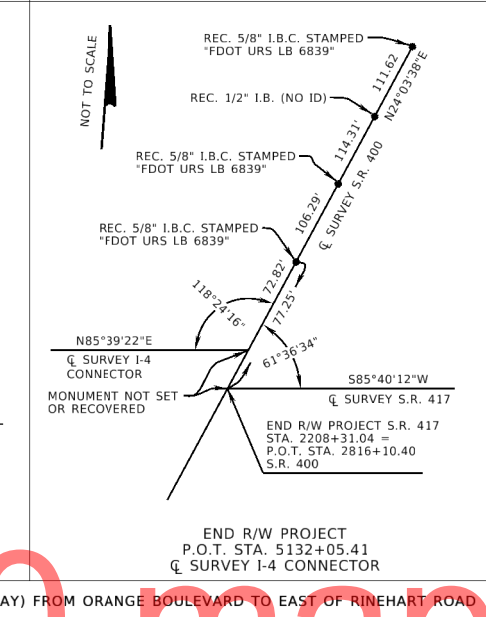
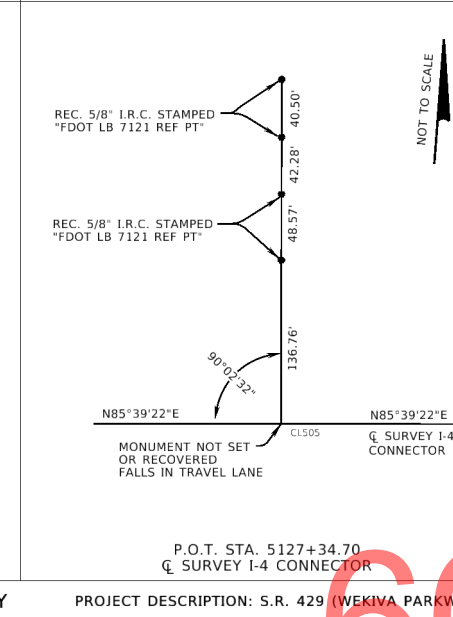
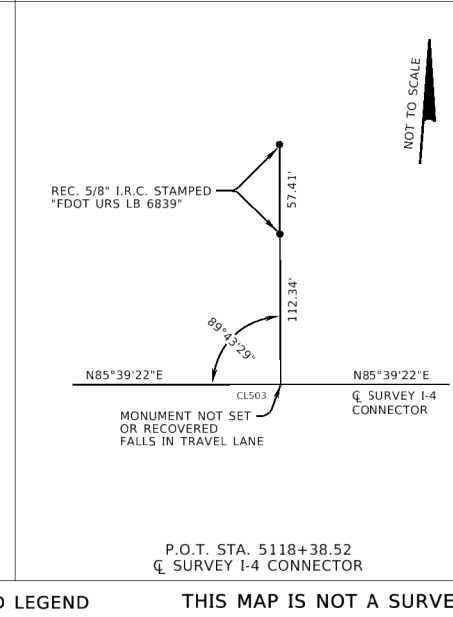
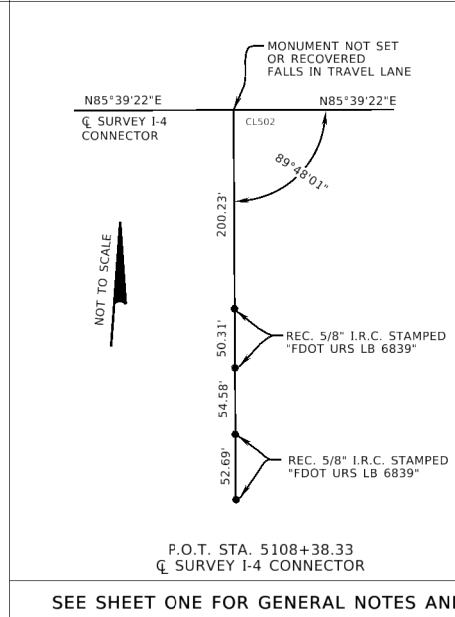
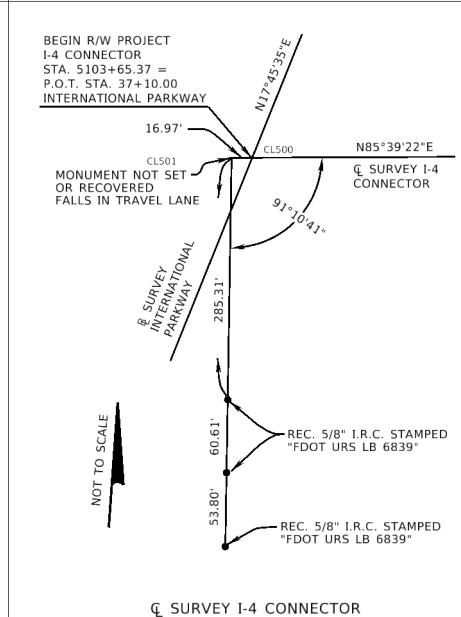
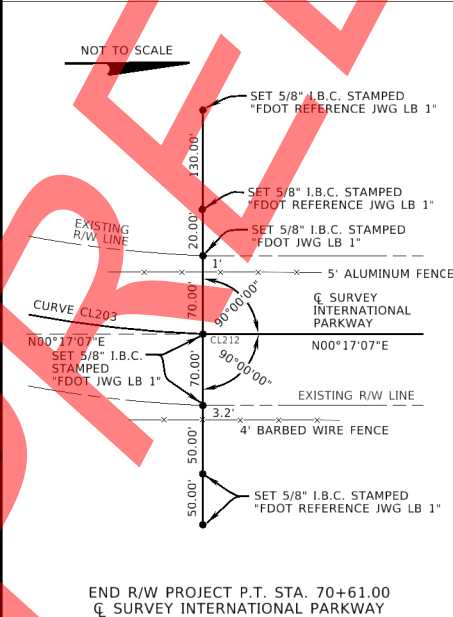
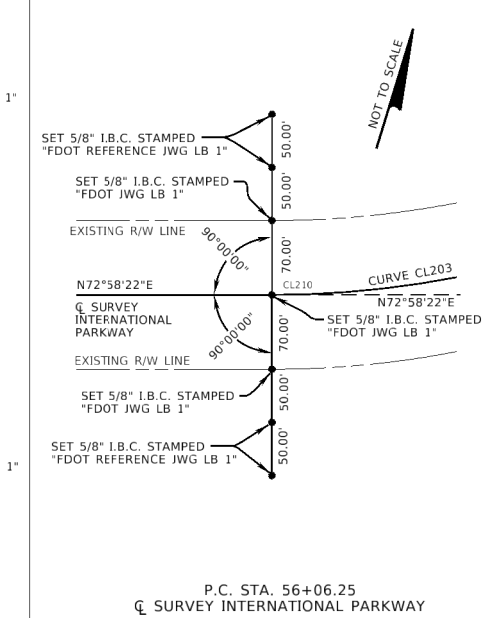
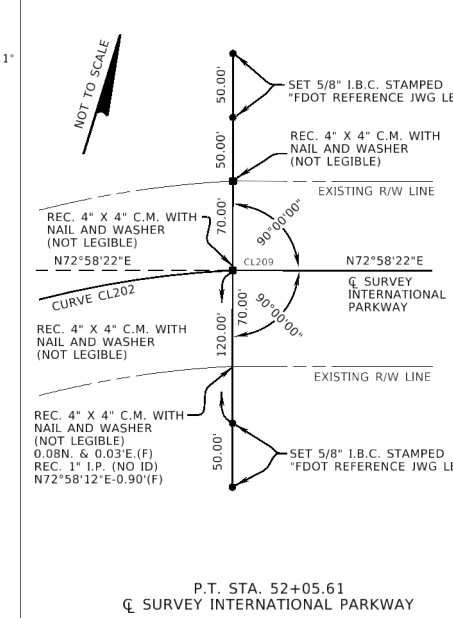
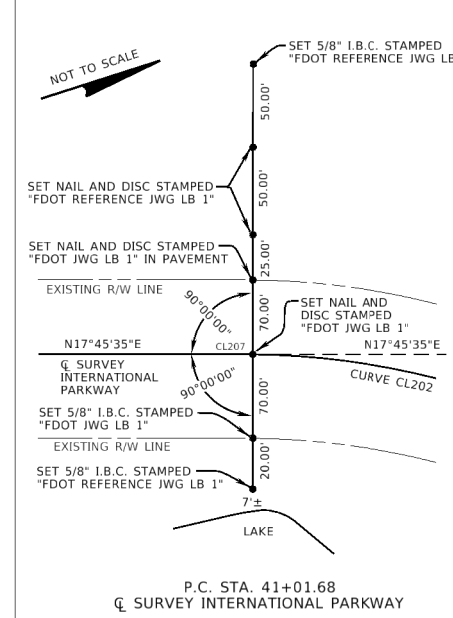
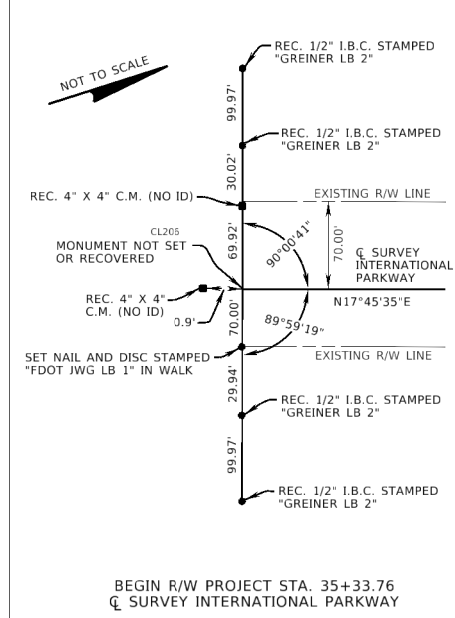
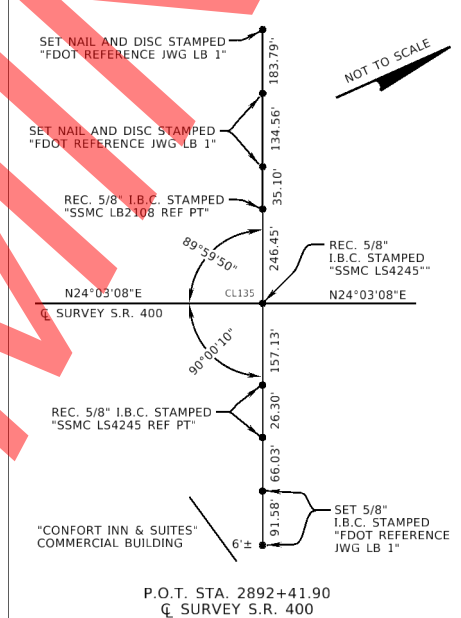
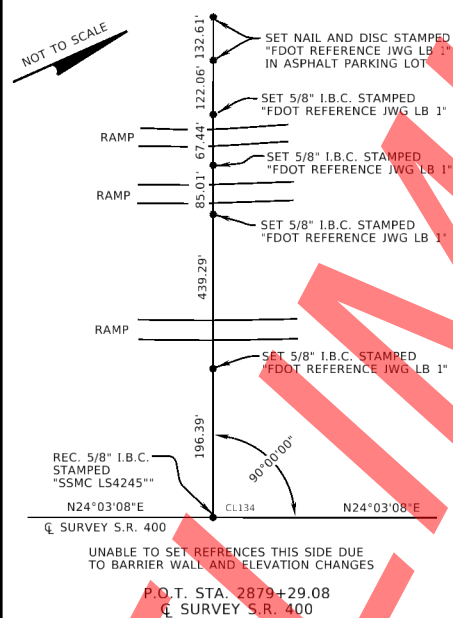
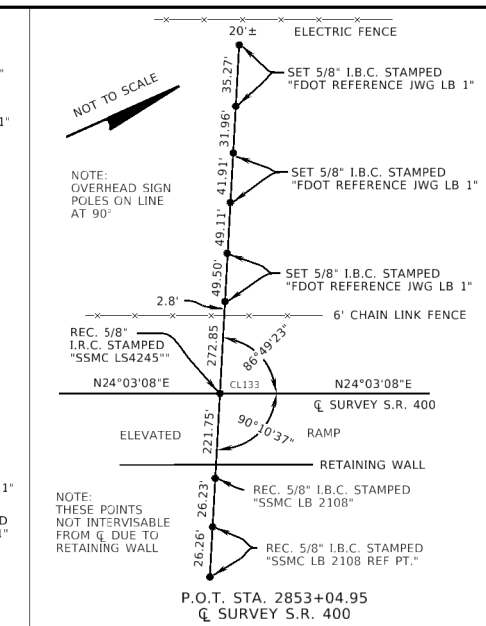
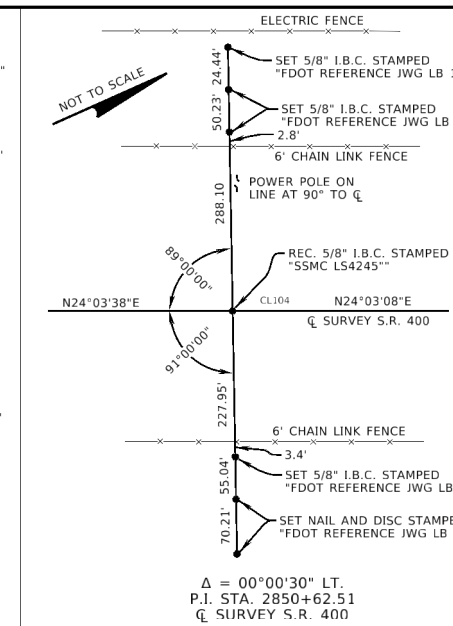
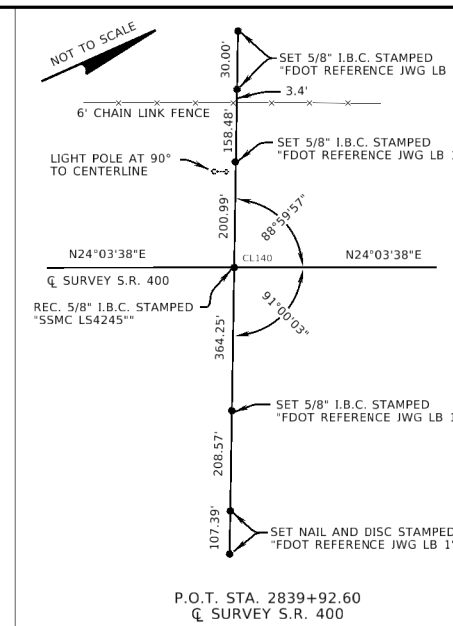
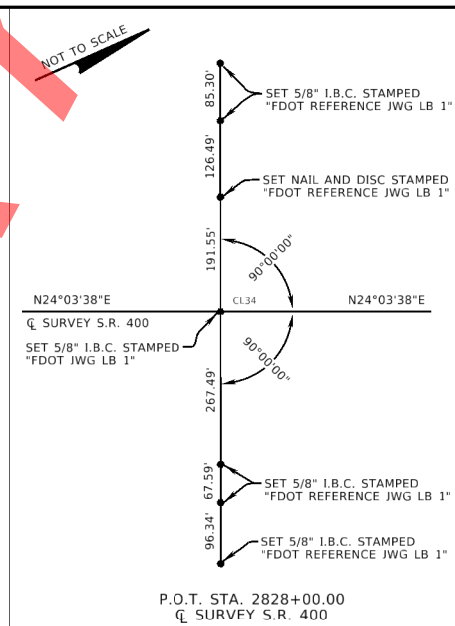
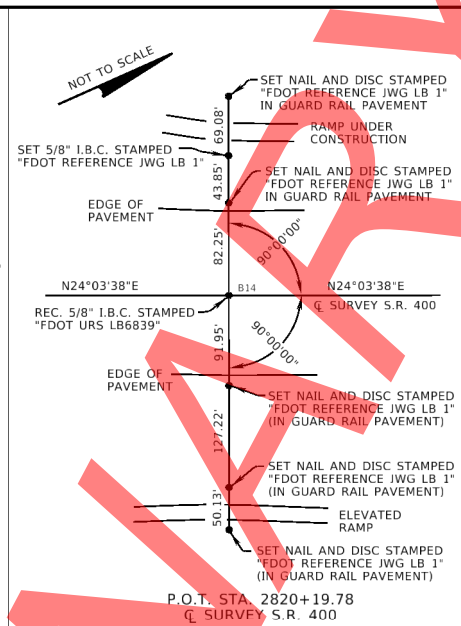
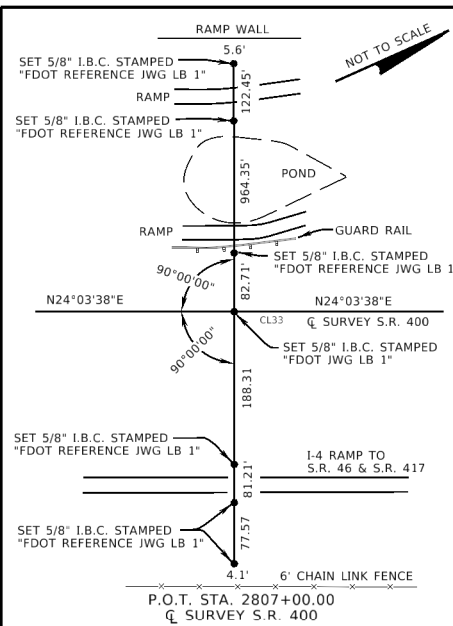
SECTION 77320  
SEMINOLE COUNTY  
F.P. NO. 240200 4

MAPS PREPARED BY:  
JONES, WOOD & GENTRY, INC.  
PROFESSIONAL SURVEYORS  
AND MAPPERS - FL 1

DATA SOURCE:  
SEE GENERAL NOTES  
SCALE: 1" = 100'

SHEET 13 OF 15





SEE SHEET ONE FOR GENERAL NOTES AND LEGEND

THIS MAP IS NOT A SURVEY

PROJECT DESCRIPTION: S.R. 429 (WEKIVA PARKWAY) FROM ORANGE BOULEVARD TO EAST OF RINEHART ROAD

FILE: DWG14.DWG  
 JOB NO.: 25001

RIGHT OF WAY MAP

FLORIDA DEPARTMENT OF TRANSPORTATION  
 SURVEYING AND MAPPING

REVISION	BY	DATE	REVISION	BY	DATE

BY	DATE
PRELIM C.SCHIELKE	06-20-13
FINAL C.SCHIELKE	
CHECKED J. CHENEY	07-26-13

FED. PROJ. N.A.  
 STATE ROAD NO. 429 (WEKIVA PARKWAY)

SECTION 77320  
 SEMINOLE COUNTY

MAPS PREPARED BY:	DATA SOURCE:
JONES, WOOD & GENTRY, INC. PROFESSIONAL SURVEYORS AND MAPPERS - L.B. 1	SEE GENERAL NOTES SCALE: 1" = 100'

F.P. NO. 240200 4 SHEET 14 OF 15

